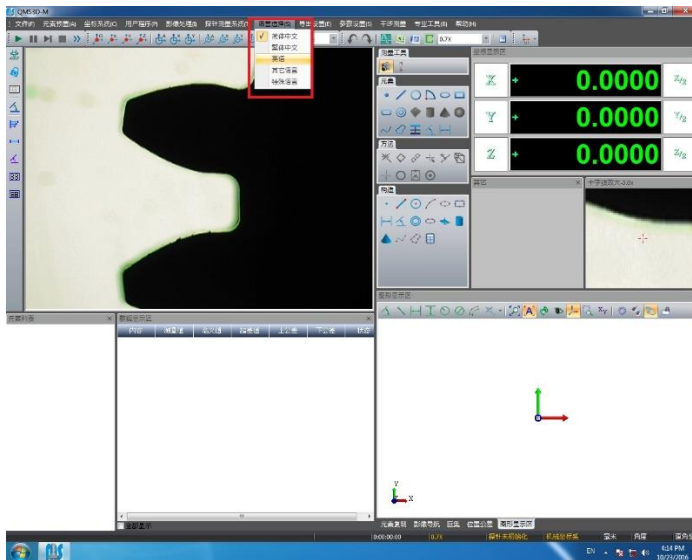


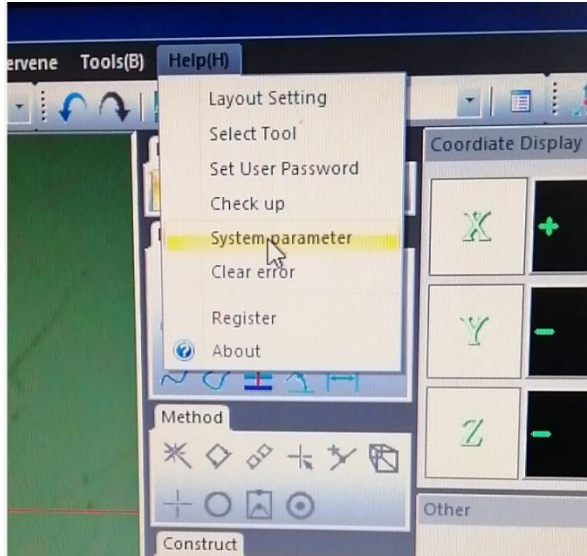
INSTALLATION OF INSIZE ISD-V150A, ISD-V250A, ISD-V300A

1. To install use "Setup1.msi" to download the software only. No security key, or image card driver needs to be reinstalled. I have attached an image of how to change the language to English in the software.
2. After installation of software, please follow steps in the software to set the standard zoom scales:
 - I. Enter the setting item as picture 1;
 - II. Enter password "insize" and set the lens to "Fixed zoom" as picture 2, click OK;
 - III. Restart the software.
3. After the above steps, the pixel calibration must be done on all zoom scales.
4. Once the above steps are complete the system is ready for use.

The updated software will allow measurement out to 6 decimal places and download a properly formatted .dfx file in inch.

Language Change

Picture 1



Picture 2

