

ELECTRONIC TORSION TESTING MACHINES

OPTIONAL ACCURACY CLASS:
0.5 CLASS

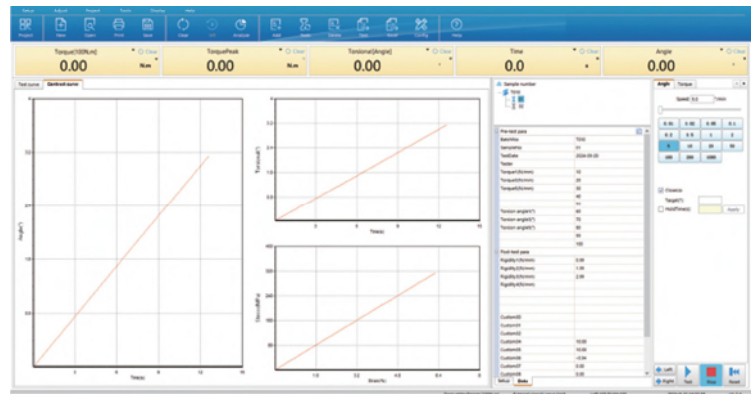


UTM-TT5-U
type A



UTM-TT500-U
type B

- Suitable for torsion testing of metallic and non-metallic materials, composite materials and components
- Servomotor drive for constant torsion speed
- Cycloid reducer drive for high efficiency and smoothness of transmission
- Electrical control system for high stability, smooth and reliable operation, fast response and low noise
- High-precision linear guide for the coaxiality and parallelism of the equipment
- Automatic torque and torsion angle tracking measurement, load rate indication, peak hold, etc.
- Efficient and professional control software
- Powerful data and curve analysis



computer and software (included)

SPECIFICATION

Part No.	UTM-TT2-U	UTM-TT5-U	UTM-TT10-U	UTM-TT30-U	UTM-TT50-U
Max. test torque	2N.m 17.70lbf.in	5N.m 44.25lbf.in	10N.m 88.50lbf.in	30N.m 265.5lbf.in	50N.m 442.5lbf.in
Type	A				
Accuracy class	1 class				
Accuracy of test torque	±1% of indicated value				
Range of test torque	2%~100%FS				
Min. resolution of test torque	0.0001N.m 0.001lbf.in	0.0001N.m 0.001lbf.in	0.001N.m 0.01lbf.in	0.001N.m 0.01lbf.in	0.001N.m 0.01lbf.in
Accuracy of torsion angle	±1% of indicated value				
Range of torsion angle	0~9999°				
Resolution of torsion angle	0.01°				
Rated speed of torsion angle	2160°/min				
Accuracy of torsion angle speed	±1% of the set value				
Accuracy of constant load torque	±1% of the set value				
Direction of torsion test	clockwise and count-clockwise operation				
Height of spindle center *	4.25"				
Max. distance between collets *	11.81"				
Dimension (W x D x H) *	43.31×12.99×17.72"				
Weight *	286.4lb				
Power supply	AC 110V, 60Hz				

Part No.	UTM-TT200-U	UTM-TT500-U	UTM-TT1000-U	UTM-TT3000-U	UTM-TT5000-U
Max. test torque	200N.m	500N.m	1000N.m	3000N.m	5000N.m
	147.5lbf.ft	368.8lbf.ft	737.6lbf.ft	2213lbf.ft	3688lbf.ft
Type	B				
Accuracy class	1 class				
Accuracy of test torque	±1% of indicated value				
Range of test torque	2%~100%FS				
Min. resolution of test torque	0.01N.m	0.01N.m	0.1N.m	0.1N.m	0.1N.m
	0.01lbf.ft	0.01lbf.ft	0.1lbf.ft	0.1lbf.ft	0.1lbf.ft
Accuracy of torsion angle	±1% of indicated value				
Range of torsion angle	0~9999°				
Resolution of torsion angle	0.01°				
Rated speed of torsion angle	1080°/min				
Accuracy of torsion angle speed	±1% of the set value				
Accuracy of constant load torque	±1% of the set value				
Direction of torsion test	clockwise and count-clockwise operation				
Height of spindle center *	5.75"			7.99"	
Max. distance between collets *	19.69"				
Dimension (W x D x H) *	63.78×15.75×40.16"			92.52×29.13×54.72"	
Weight *	572.8lb			1498.2lb	
Power supply	AC 110V, 60Hz, 0.4kW~1kW			AC 480V, 3Ø, 60Hz, 2kW~4kW	

*Can be customized to adjust according to test requirements

STANDARD DELIVERY

Main unit	1 pc
Measuring software	1 set
Computer	1 pc
Printer	1 pc
Security cover	1 pc

OPTIONAL ACCESSORY

Torsion fixture	customized according to test requirements
-----------------	---