

SCANNING ACOUSTIC MICROSCOPE

CUSTOMIZED ACCORDING TO WORKPIECES

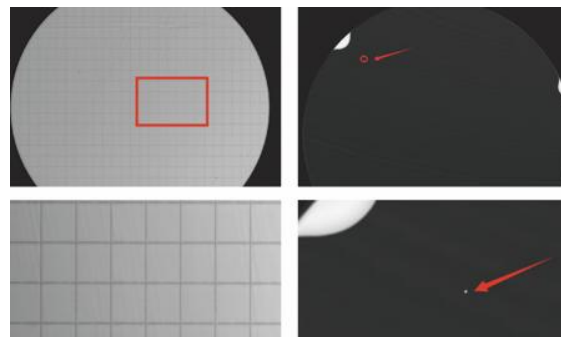
- Suitable for automatic scanning of inclusions, cracks, porosity, delamination and other defects in metal and composite parts
- It supports a full range of imaging modes including A, B, C, D and X, presenting product details with high precision, with data marking and waveform comparison functions, it enables in-depth tracking and accurate analysis of defects
- Based on the propagation time and attenuation degree of the wave, the morphology and defect distribution inside the detection object are quickly presented
- The number and dimensions of trays are customizable, with built-in functions including automatic image segmentation, empty tray recognition and skipping, etc.
- Multiple measurement modes, precise evaluation, supporting up to 9 manual measurement methods including point-to-point, parallel width, multi-segment, and more to meet diverse measurement needs
- Visual intelligence, algorithm import, supporting machine vision based image evaluation algorithm import, realizing automated defect recognition and evaluation
- After manual framing of the defect area, it automatically calculates the defect size, area and proportion, simplifying the analysis process
- A, B, C, D scan support exporting PNG, BMP, TIFF and other formats of images, clearly displaying detection results



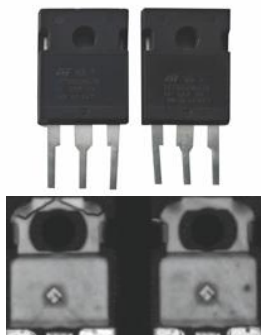
TEST INTERFACE



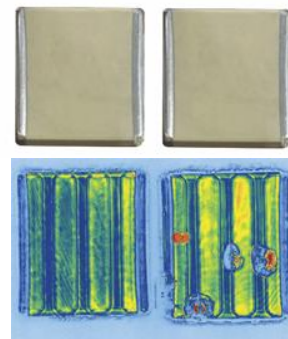
scan integrated image interface



wafer inspection interface



IGBT single tube detection interface



multi layer ceramic capacitor detection interface

SPECIFICATION

Part No.	UFD-CY310-U	UFD-CY320-U	UFD-CY330-U	UFD-CY340-U	UFD-CY350-U	UFD-CY360-U
Working frequency	1~150MHz	5~300MHz	5~500MHz	1~150MHz	5~300MHz	5~500MHz
Workstation	single station	single station	single station	dual station	dual station	dual station
Sampling frequency	2GS/s	2GS/s	2GS/s	1GS/s/CH	1GS/s/CH	1GS/s/CH
Gain adjustment range	-32~80dB					
Gain adjustment step	0.01dB					
Maximum repetition frequency	65kHz					
Raster ruler resolution	0.1μm					
Maximum detection speed	39.37"/s					
Maximum imaging area	15.75"×15.75"			15.75"×31.50"		
Repeatability	±0.5μm					
Scanning range	15.75"×15.75"×3.94" (customizable)					
Water tank dimensions	25.60"×36.61"×5.91" (customizable)					
Operating environment	41°F~95°F, relative humidity ≤85%					
Shockproof requirements	low frequency: <50μm/s, high frequency: <20μm/s					
Power supply	110V, 60Hz					
Dimension (L×W×H)	39.37"×39.37"×55.12" (customizable)					

REFLECTION PROBE TECHNICAL PARAMETERS

Code	Frequency	Aperture	Underwater focal length	Aperture range	Focal length range
UFD-CY51 (optional)	40MHz	.24"	.63"	.16"~.24"	.50"~1.18"
UFD-CY52 (optional)	5.0MHz	.24"	1.58"	.16"~.39"	unfocused/.60"~2.76"
UFD-CY53 (optional)	10MHz	.24"	1.18"	.12"~.26"	unfocused/.79"~2.36"
UFD-CY54 (optional)	15MHz	.24"	1.18"	.12"~.26"	unfocused/.79"~2.36"
UFD-CY55 (optional)	20MHz	.16"	.79"	.10"~.20"	unfocused/.79"~2.36"
UFD-CY56 (optional)	30MHz	.16"	.50"	.16"~.24"	unfocused/.50"~1.58"
UFD-CY57 (optional)	50MHz	.12"	.39"	.12"~.16"	.39"~.79"
UFD-CY58 (optional)	75MHz	.12"	.39"	/	.32"~.50"
UFD-CY59 (optional)	80MHz	.12"	.39"	/	.32"~.50"
UFD-CY60 (optional)	100MHz	.08"	.32"	/	.32"~.39"
UFD-CY61 (optional)	110MHz	.08"	.39"	/	/
UFD-CY62 (optional)	200MHz	.08"	.32"	/	/

TRANSMISSION PROBE TECHNICAL PARAMETERS

Code	Frequency	Aperture	Underwater focal length	Focal range
UFD-CY63 (optional)	25MHz	.24"	.63"	.63"~1.18"
UFD-CY64 (optional)	40MHz	.24"	.63"	.50"~1.18"
UFD-CY65 (optional)	75MHz	.12"	.39"	.32"~.50"
UFD-CY66 (optional)	100MHz	.08"	.32"	/

Note: Other probes can be customized according to customer requirements

STANDARD DELIVERY

Main unit	1pc
27" display screen	1pc
Industrial personal computer	1pc
USB disk	1pc
Water filtration system	1pc