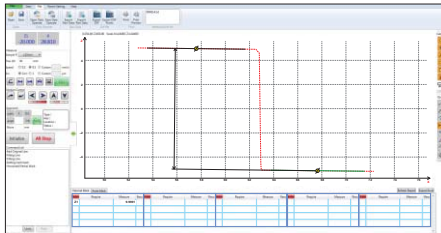
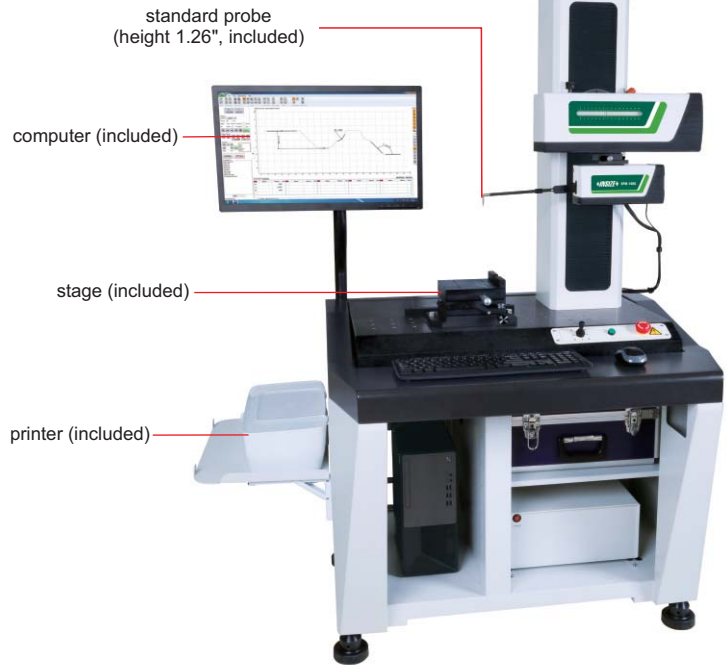


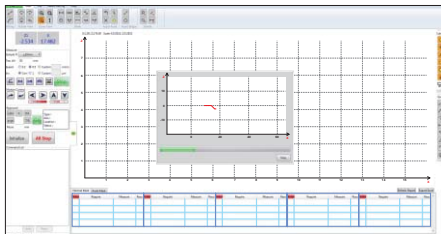
SURFACE PROFILE MEASURING MACHINE

PART No. SPM-1000-U

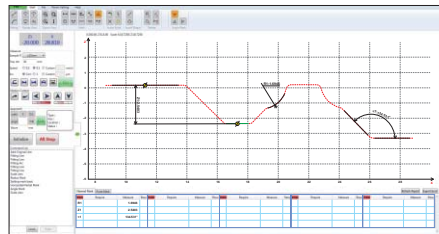
- Software is included, for surface profile measurement and data output
- Probe compensation
- Output as format txt, csv, etc.
- Large range design, the leverage ratio is 1:2.2, maintain the original accuracy of the sensor
- The overall structure of the Z-axis sensor does not have any elastic components, ensuring the measuring force is constant regardless the position of probe



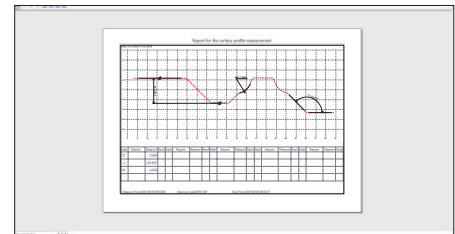
calibration



contour scanning



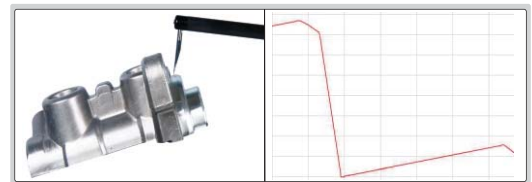
dimension measurement



data output

SPECIFICATION

X axis measuring range	5.51"
X axis resolution	7.87 μ m
X axis straightness	31.5 μ m/3.94"
X axis traverse speed	.004~.39"/s
Z axis measuring range	\pm .79"
Z axis resolution	1.97 μ m
Z axis traverse speed	.02~.39"/s
Linear accuracy	$\pm(59+ 200H)\mu$ m, H is measuring height in inch
Angular measuring accuracy	$\pm 2'$
Arc measuring accuracy	$\pm(79+125R)\mu$ m, R is .079~.39" standard ball
Radius of probe tip	.001"
Traverse direction	backward
Measuring force	.025~.035ozf
Measuring unit	mm/inch
Traceable angle	72° (upward), 87° (downward)
Drive mode	motor
Travel of Z axis	16.93"
Dimension (L×W×H)	47.24×27.56×70.08"
Power supply	110 \pm 5%V, 50Hz
Weight	705.48lb



standard balls (included)



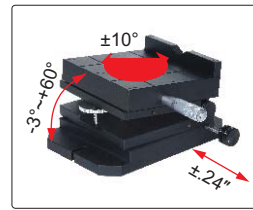
standard blocks (included)



standard shaft (included)

STANDARD DELIVERY

Main unit	1 pc
Standard stylus and arm	1 pc of each
Standard block	2 pcs
Standard ball	2 pcs
Standard shaft	1 pc
Stage	1 pc
Vise	1 pc
Measuring arm	1 pc
Computer	1 pc
Measurement software	1 pc
Printer	1 pc
Installation tools	1 set



stage (included)



vise (included)

OPTIONAL ACCESSORY

Probe	see details
-------	-------------

SPECIFICATION OF PROBES AND ARMS

<p>chisel stylus</p> <p>code SPM-1000-T01 (H=1.26", included) code SPM-1000-T02 (H=1.89", optional) code SPM-1000-T03 (H=2.68", optional)</p>	<p>cone stylus</p> <p>code SPM-1000-Z01 (H=1.26", optional) code SPM-1000-Z02 (H=1.89", optional) code SPM-1000-Z03 (H=2.68", optional)</p>	<p>ball stylus</p> <p>code SPM-1000-R01 (H=1.26", optional) code SPM-1000-R02 (H=1.89", optional) code SPM-1000-R03 (H=2.68", optional)</p>
<p>standard arm, part no. SPM-1000-SP (included), stylus is not included</p>	<p>probe for small holes, part no. SPM-1000-SBP (optional), stylus is included</p> <p>measure the contour of holes with diameter > .31" DIA</p>	
<p>transverse probe, part no. SPM-1000-LP (optional), stylus is included</p> <p>measure the contour of holes in radial direction</p>		