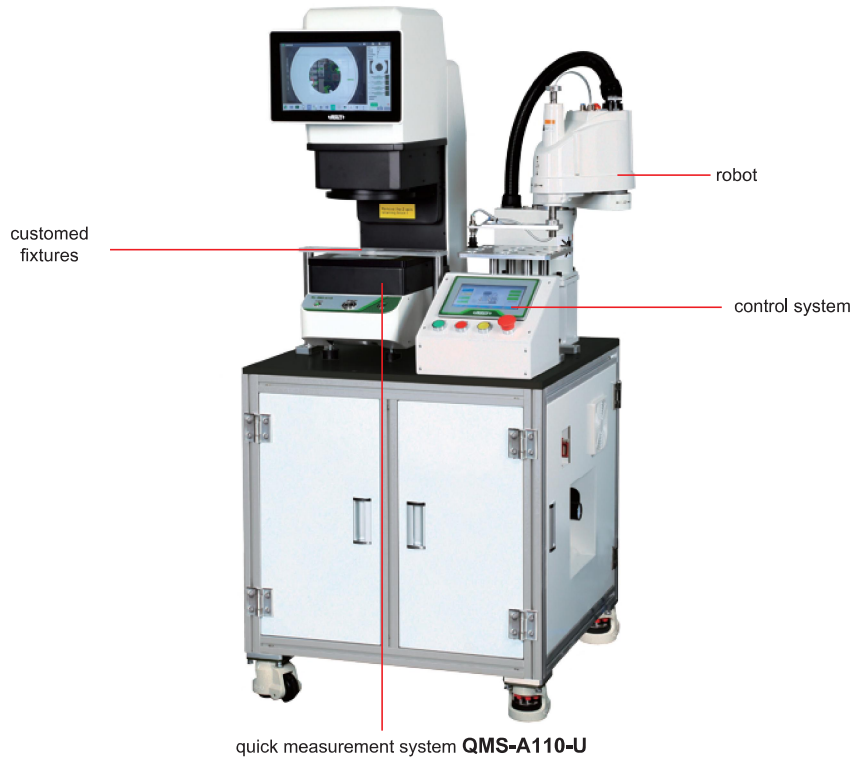


# AUTOMATIC QUICK MEASUREMENT SYSTEM PART NO. RBT-QM02-U

CUSTOM-MADE



### OPERATION PROCESS

- Step 1: Place the workpiece manually on the recess in the loading area
- Step 2: Press the reset button to return the robot to the initial position
- Step 3: Press the start button, the system prompts whether the workpiece is correctly placed and click OK
- Step 4: The robot picks up the workpiece and places it in the QMS test position
- Step 5: The QMS initiates a measurement and outputs the results
- Step 6: The robot removes the workpiece
- Step 7: The robot places the workpiece in the OK or NG station according to the measurement results

- Lightweight SCARA robot for high-speed and precision
- Quick measurement system automatically measures the dimensions of the workpiece and provides real-time feedback to the control system
- Control system Modbus Tcp via bus communication, high speed, high efficiency and easy to extend

## SPECIFICATION

Robot	robot arm spreading	15.74"
	Max working speed	23.70ft/s
	Max weight of workpiece	6.61lb
	repeat positioning accuracy	±787.4μin
	number of control axis	4
	communication protocols	Ethernet Modbus Tcp
Quick measurement system	view field	3.94×3.15"
	measurement range	3.86×3.07"
	measurement accuracy	±118.11μin
	repeatability	39.37μin
	measurement time	<2s
Power supply	110V, 60Hz, 3000W	
Supply pressure	72.52~87.02psi	
Environmental requirement	temperature: 68°F±3.6°F, relative humidity: 30%~80%	
Net weight	330.69lb	

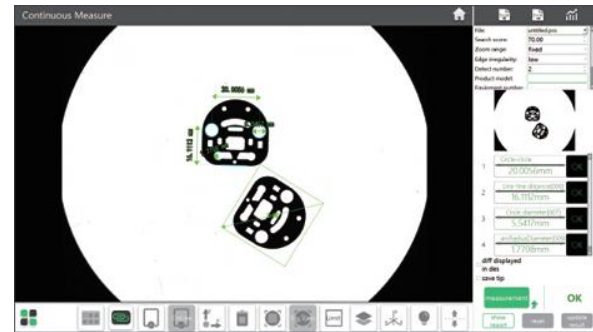
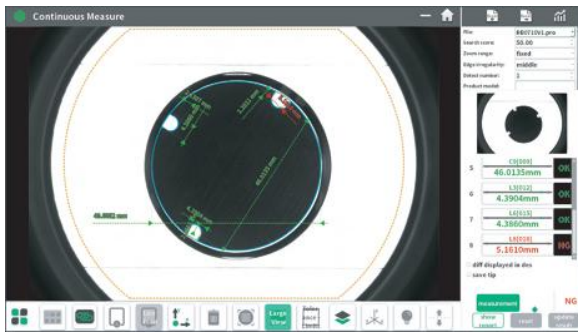
- \* The quick measurement system is available in different models depending on the workpiece

## STANDARD DELIVERY

Robotic system	robot body
	robot control cabinet
	programming guide
Quick measurement system	main unit
	computer
Control touch screen	1set
Control box	1set

## Quick measurement system software (included)

- Automatically measure widths, holes, rings, angles at the same time, simple and efficient



- Measuring result can be stored automatically, OK items and NG items can be counted automatically

