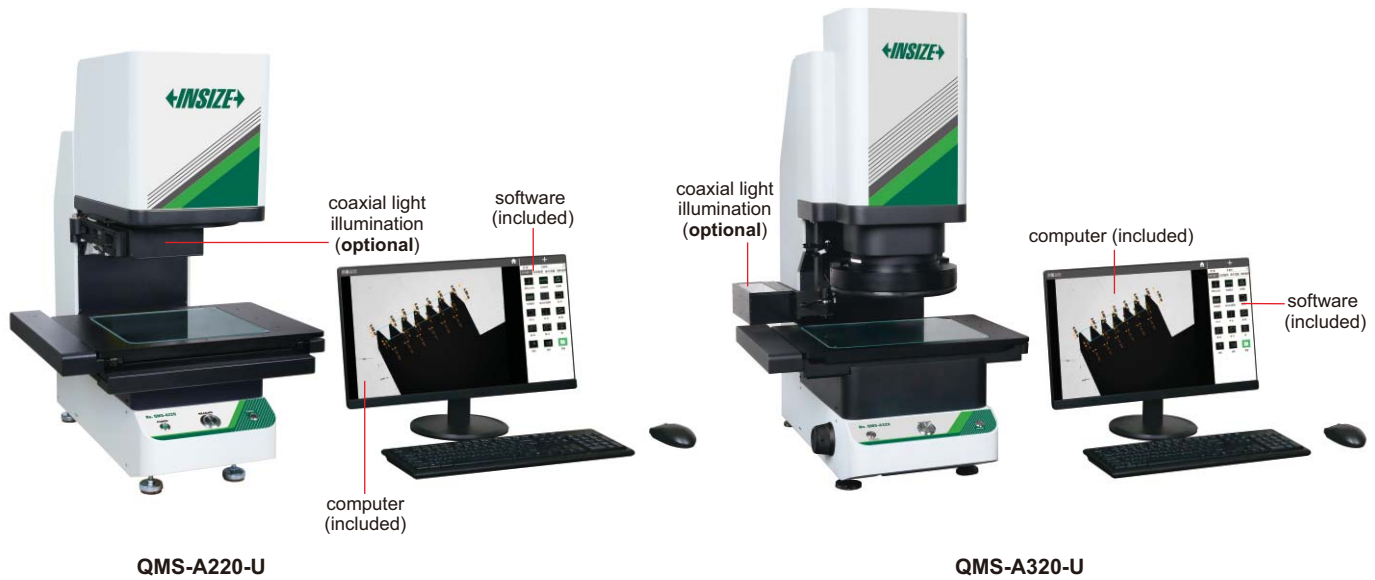


# QUICK MEASUREMENT SYSTEMS (WITH STITCHING)



## SPECIFICATION

Part No.	QMS-A220-U		QMS-A315-U		QMS-A320-U	
Optical lens	Dual-field dual-telecentric low-distortion lens					
View field range	wide view field: 3.94" DIA small view field: .98" DIA	wide view field: 3.94" DIA small view field: .98" DIA	wide view field: 3.94" DIA small view field: .98" DIA	wide view field: 3.94" DIA small view field: .98" DIA	wide view field: 5.91" DIA small view field: 1.97" DIA	wide view field: 5.91" DIA small view field: 1.97" DIA
Measurement range	7.87×7.87"	5.12×5.12"	11.81×7.87"	9.06×5.12"	11.81×8.27"	7.87×5.31"
Measurement accuracy	without splicing ±.00012" ①	±.00004" ②	±.00012" ①	±.00004" ②	±.0002" ③	±.00008" ④
Repeatability	without splicing ±.00004"	±.00002"	±.00004"	±.00002"	±.00004"	±.00002"
Magnification	2.8X	11X	1.9X	5.75X	1.9X	5.75X
Travel range (X×Y×Z)	4.72×5.51×2.95"		8.07×4.92×2.95"		5.91×3.94×2.95"	
Glass stage size	9.80×9.02"		12.52×10.55"		12.52×10.55"	
Max. weight of workpiece	11lb					
Measurement time	<2s					
Measurement data	2D measurement					
Power supply	110V, 50Hz, 600W					
Illumination system	back light	telecentric illuminator, green light				
	ring light	4-zone circular white high light circular (directional) low-angle green light (electric)				
	coaxial light (optional)	vertical illuminator, white light				
Environmental requirement	Temperature: 68°F±3.6°F, relative humidity: 30%–80%, vibration: <.00007oz, less than 15Hz					
Dimension (L×W×H)	20.94×18.90×30.16"		20.94×19.57×30.16"		26.34×20.08×34.76"	
Weight	110lb		132lb		149lb	

\* The optimum temperature is 68°F±1.8°F

① Within 3.15×2.52", on focal position and environment temperature at 68°F±1.8°F

② Within .79×.63", on focal position and environment temperature at 68°F±1.8°F

③ Within 4.72×3.46", on focal position and environment temperature at 68°F±1.8°F

④ Within 1.57×1.10", on focal position and environment temperature at 68°F±1.8°F

⑤ Within 7.09×7.09", on focal position, environment temperature at 68°F±1.8°F, and workpiece is less than 4lb, L is the travel of stage in inch

⑥ Within 4.61×4.61", on focal position, environment temperature at 68°F±1.8°F, and workpiece is less than 4lb, L is the travel of stage in inch

⑦ Within 10.63×7.09", on focal position, environment temperature at 68°F±1.8°F, and workpiece is less than 4lb, L is the travel of stage in inch

⑧ Within 8.15×4.61", on focal position, environment temperature at 68°F±1.8°F, and workpiece is less than 4lb, L is the travel of stage in inch

⑨ Within 10.63×7.44", on focal position, environment temperature at 68°F±1.8°F, and workpiece is less than 4lb, L is the travel of stage in inch

⑩ Within 7.09×4.76", on focal position, environment temperature at 68°F±1.8°F, and workpiece is less than 4lb, L is the travel of stage in inch

- One or more workpieces can be measured by one step operation
- Place workpieces at any position
- Focus and measure automatically

#### STANDARD DELIVERY

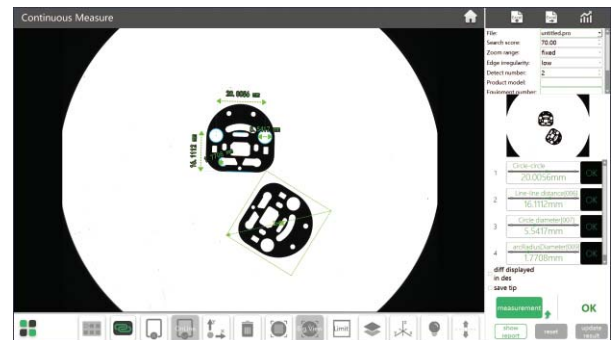
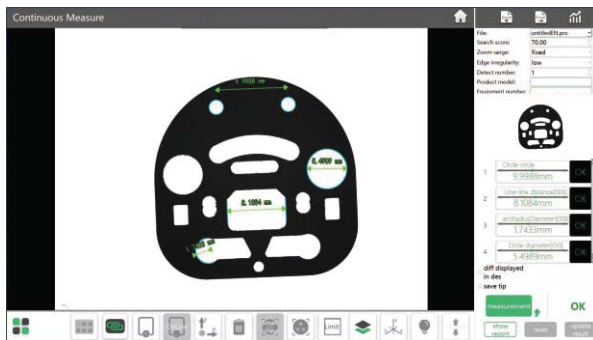
Main unit	1 pc
Computer	1 pc
Software	1 pc

#### OPTIONAL ACCESSORY

Coaxial light illumination	QMS-23-A1
Data transmission function of software	QMS-23-D
CAD import function of software	QMS-23-C
Laser sensor	QMS-43-SJ
Foot-switch	QMS-43-FS

#### Software (included)

- Automatically measure widths, holes, rings, angles at the same time, simple and efficient.



- Measuring result can be stored automatically. OK items and NG items can be counted automatically.

