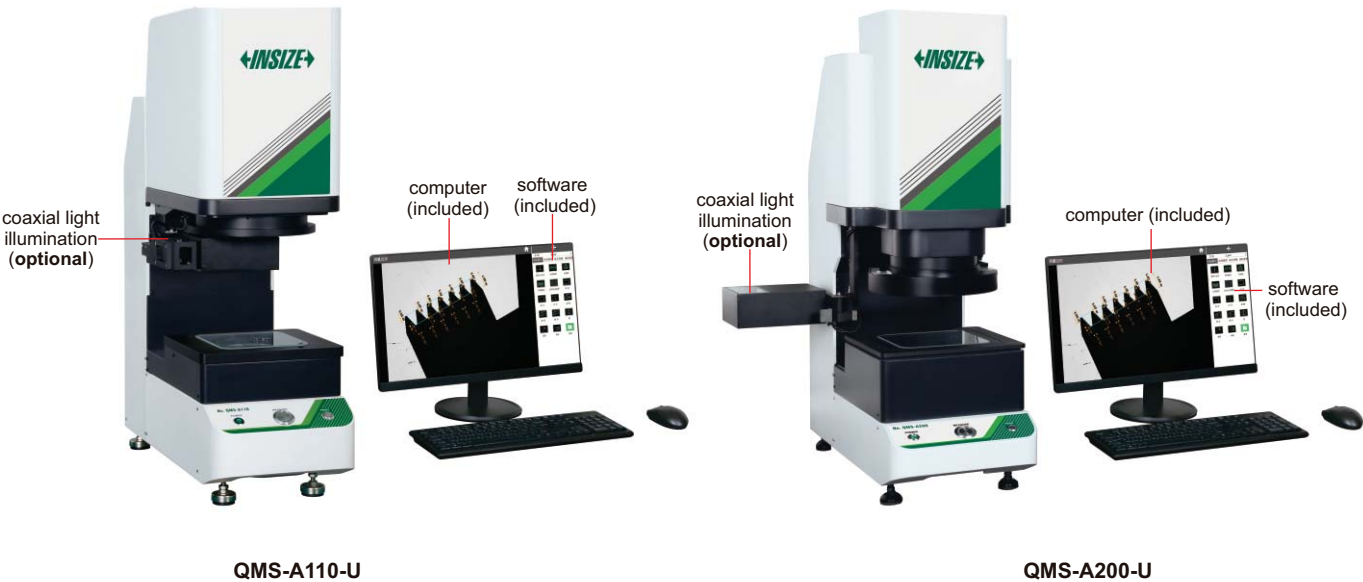


QUICK MEASUREMENT SYSTEMS (WITHOUT STITCHING)

NOTE: NOT SUITABLE FOR
MEASURING SMALL SIZES SUCH
AS THREADS, CHAMFERS, ETC



SPECIFICATION

Part No.		QMS-A110-U	QMS-A200-U	
Optical lens		Low-distortion lens, single-field telecentric 3.94" DIA	Dual-field dual-telecentric low-distortion lens wide view field: 5.91" DIA small view field: 1.97" DIA	
View field range		3.94×3.15"	wide view field	small view field
			5.91×4.33"	1.97×1.38"
Measurement range (X×Y)		3.86×3.07"	5.83×4.25"	1.89×1.30"
Measurement accuracy *		±.00012" ①	±.0002" ②	±.00008" ③
Repeatability		±.00004"	±.00004"	±.00002"
Max. weight of workpiece				
Measurement time		11lb		
Measurement data		<2s		
Power supply		2D measurement		
		110V, 50Hz, 600W		
Illumination system	back light	telecentric illuminator, green light		
	ring light	4-zone circular white high light circular (directional) low-angle green light (electric)		
	coaxial light (optional)	vertical illuminator, white light		
Environmental requirement		Temperature: 68°F±3.6°F, relative humidity: 30%~80%, vibration: <.00007oz, less than 15Hz		
Dimension (L×W×H)		22.83×9.25×31.10"	25.12×13.23×34.84"	
Weight		88lb	132lb	

* The optimum temperature is 68°F±1.8°F
① Within 3.15×2.52", on focal position and environment temperature at 68°F±1.8°F
② Within 4.72×3.46", on focal position and environment temperature at 68°F±1.8°F
③ Within 1.57×1.10", on focal position and environment temperature at 68°F±1.8°F

- One or more workpieces can be measured by one step operation
- Place workpieces at any position
- Focus and measure automatically
- Measurement of 999+dimensions and 200+workpieces
- QMS-A110-U is suitable for measuring small flat parts
- QMS-A200-U is suitable for measuring flat parts with low precision requirements and small surface sizes

STANDARD DELIVERY

Main unit	1 pc
Computer	1 pc
Software	1 pc



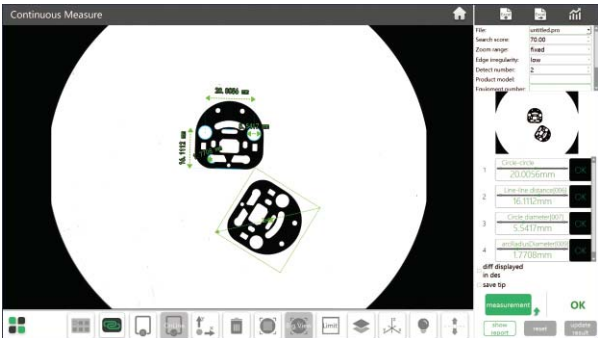
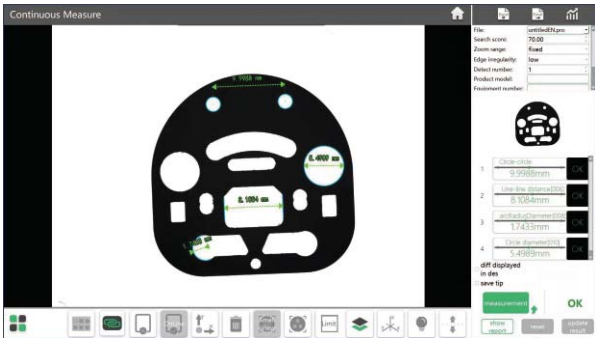
11.6" LCD(optional)

OPTIONAL ACCESSORY

Coaxial light illumination	QMS-23-A3 (for QMS-A110-U) QMS-23-A4 (for QMS-A200-U)
Data transimission function of software	QMS-23-D1
CAD import function of software	QMS-23-C1
Foot-switch	QMS-43-FS1
11.6" LCD	QMS-23-B1(must be installed in factory)

Software (included)

- Automatically measure widths, holes, rings, angles at the same time, simple and efficient.



- Measuring result can be stored automatically. OK items and NG items can be counted automatically.

