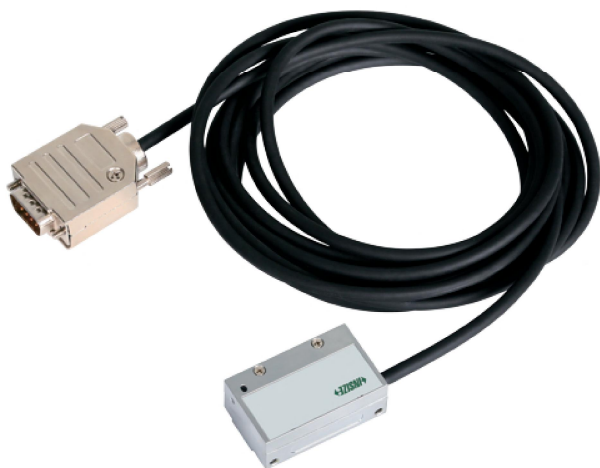


## OPEN-TYPE STEEL LINEAR SCALES

**IP40**  
WATERPROOF



reader  
**LSA-A03**

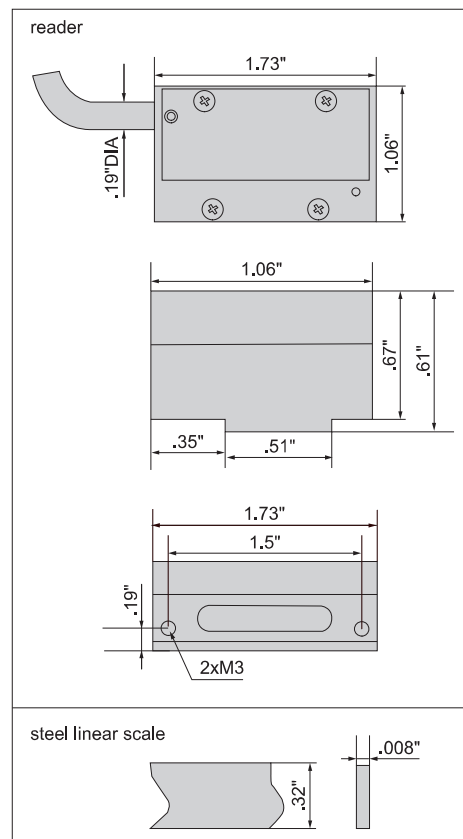


steel linear scale  
**LSA-B1**

- Connected to digital readouts (optional part No.: **ISL-DR2/SR3** and **ISL-LCD7**) or PLC
- Can set the zero origin arbitrarily
- Optically coated lens, high depth of field, improve signal-to-noise ratio
- Cable length: 10ft (can be customized up to 49ft)

### READER SPECIFICATION

Part No.		LSA-A01	LSA-A02	LSA-A03
Resolution		.000005"	.00002"	.00005"
Output signal		TTL		
Socket		DB 9		
Electronic subdivision error		<1.57μin		
Max. response speed		8.2ft/s (related to resolution and counter min. clock)		
Unidirectional repeatability of reference origin		1 resolution		
Operating environment	work	32~140°F, ≤80% (non-condensing)		
	storage	-4~158°F, ≤80% (non-condensing)		
Dust/waterproof		IP40		
Weight		.07lb		



### STEEL LINEAR SCALE PART NO.

Part No.	Length*	Part No.	Length*
<b>LSA-B1</b>	3ft/1m	<b>LSA-B6</b>	20ft/6m
<b>LSA-B2</b>	6ft/2m	<b>LSA-B7</b>	23ft/7m
<b>LSA-B3</b>	10ft/3m	<b>LSA-B8</b>	26ft/8m
<b>LSA-B4</b>	13ft/4m	<b>LSA-B9</b>	30ft/9m
<b>LSA-B5</b>	16ft/5m	<b>LSA-B10</b>	33ft/10m

\* Customized length (max. 10m) according to customer requirements



assistant tool (optional)



application

### STEEL LINEAR SCALE SPECIFICATION

Pitch	787μin
Accuracy	±60μin/ft

### OPTIONAL ACCESSORY

Part No.	Name	Description
<b>LSA-C01</b>	assistant tool	mounting steel linear scales