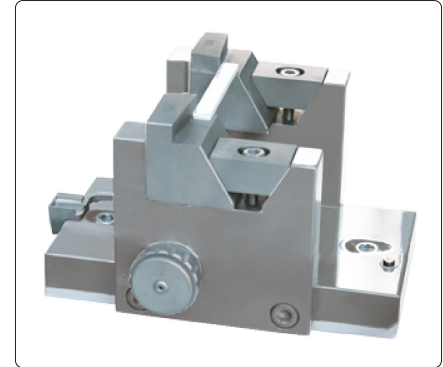


CHARPY IMPACT TESTING MACHINES (STANDARD TYPE)



ITM-JA50-U



support (included)

- According to GB/T 1043, GB/T 21189, JB/T 8762, ISO 179
- For impact resistance testing of non-metallic materials such as plastics, nylon, rubber, wood, FRP, composite plastic pipes, electrical insulating materials, etc.
- Locknut-mounted pendulum for easy replacement
- Easy and efficient centering device

SPECIFICATION

Part No.		ITM-JA5-U	ITM-JA50-U
GB/T 1043 ISO 179	Charpy impact energy	0.5J, 1J, 2J, 4J, 5J	7.5J, 15J, 25J, 50J
	radius of the pendulum	230mm	395mm
	impact velocity	2.9m/s	3.8m/s
	pendulum moment	M0.5=0.26795N·m M1.0=0.53590N·m M2.0=1.07180N·m M4.0=2.14359N·m M5.0=2.67949N·m	M7.5=4.01924N·m M15.0=8.03848N·m M25.0=13.39746N·m M50.0=26.79492N·m
	angle of the striking edge	30°±1°	
	radius of the striking edge	2±0.5mm	
	radius of the support	1±0.1mm	
	pendulum pre-elevation angle	150°	
	span of the standard support	62mm	
Resolution of energy	0.001J		
Resolution of angle	0.01°		
Power supply	AC 110V, 60Hz, 0.1kW		
Dimension (L×W×H)	27.56×12.20×29.53"	47.24×12.99×43.31"	
Net weight	330.69lb	440.92lb	

STANDARD DELIVERY

Main unit	1 pc
Charpy pendulum	2 pcs
Pendulum weight	1 set
Jaw (62mm)	1 set
Centering template (62mm)	1 pc
Hex key	1 set
Standard Charpy support	1 pc