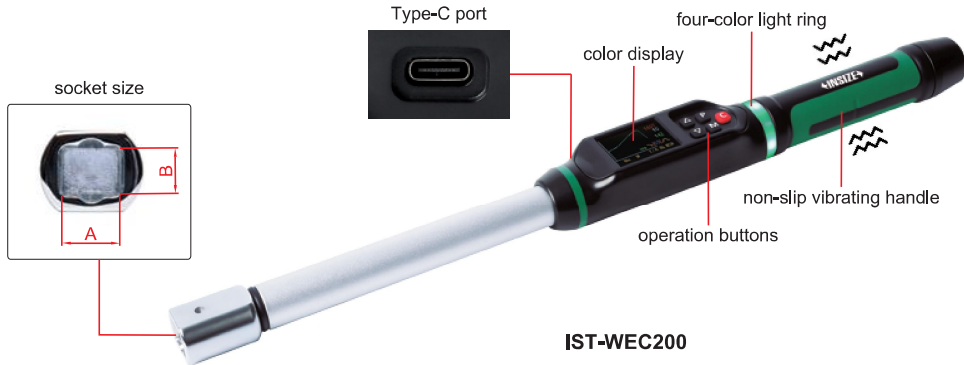


INTERCHANGEABLE HEAD PRODUCTION-GRADE COLOR DIGITAL TORQUE WRENCHES (WIFI LAN)



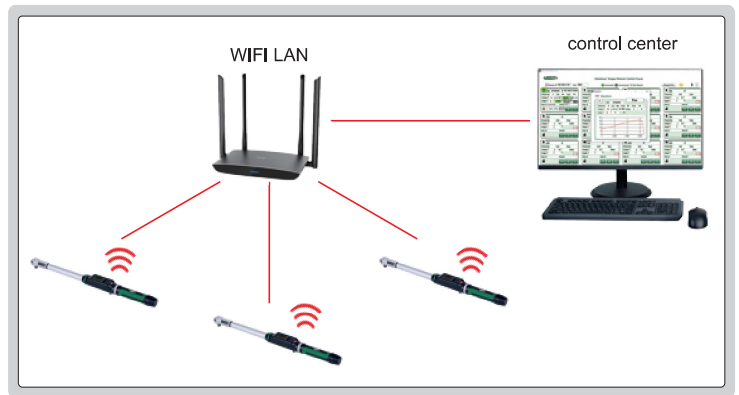
DATA OUTPUT



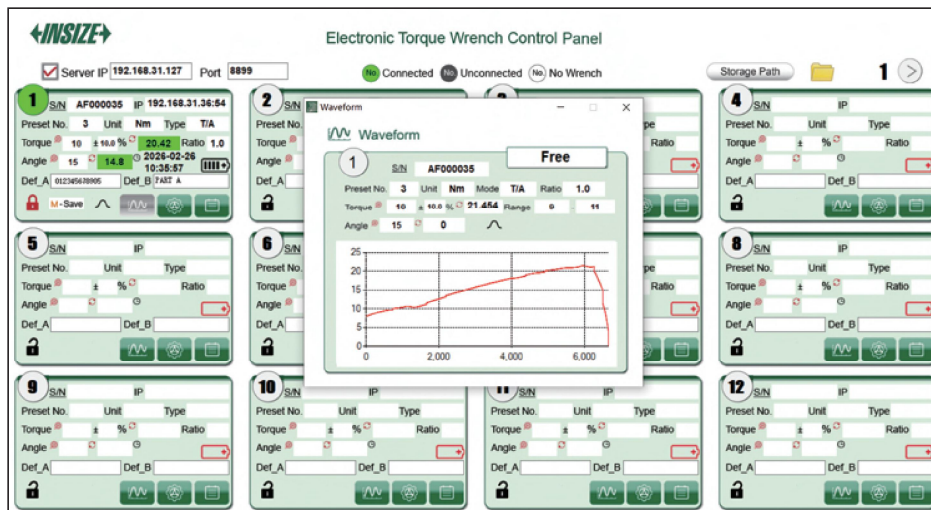
IST-WEC200

Torque wrench:

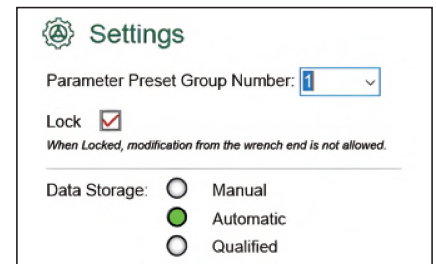
- Aluminum tube body for lighter use
- Unit: N.m, cN.m, lb.in, lb.ft, kg.cm, kg.m, oz.in, °
- Clockwise and counter-clockwise operation
- Three operating modes:
 - Peak mode: measure the peak torque
 - Angle mode: angle measuring start from 5% of maximum range
 - One step mode: angle measuring start from specified torque
- 20 preset parameter groups are available for recall which can be locked to prevent changes and switching
- With audible and visible and handle vibration alarm:
 - when approaching target value, yellow LED light on, buzzer intermittent alarm
 - when reaching target value, green LED light on, buzzer rapid alarm, handle vibrate
 - when exceeding target value, red LED light on, buzzer long-lasting alarm, handle accelerated vibrate
 - During data transmission, blue LED light on
- Interval display of curved interface and main interface after unloading
- Upper and lower tolerance limits (angle tolerance fixed at $\pm 1^\circ$) can be set to determine pass or fail by LED lights
- Provide torque graph for analyzing and adjusting the tightening strategy
- Open communication protocols for users to develop and interface with factory MES, PLC and other systems
- Automatic zeroing during continuous operation
- Memory of 1000 results and 100 historical review curves
- Unique ratio function, torque can be automatic corrected by set factor when head is extended
- Auto power off time can be set
- Two 18650 high capacity rechargeable lithium batteries for alternate use



basic transmission software application



work display software (included)



Preset Groups

S/N: AF000035 Torque Capacity: 200.00 Nm

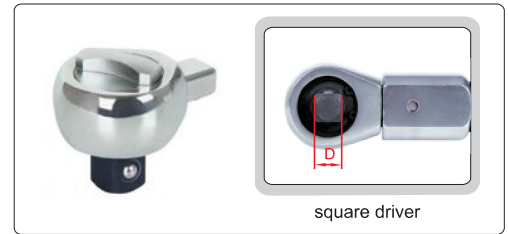
No.	Type	Unit	Mode		Torque	±Err%	Angle	Ratio
			Peak	Track				
1	T	Nm	⊙	○	20.0	10.0		1.2
2	A	Nm	⊙	○			15	
3	T/A	Nm	⊙	○	10.0	10.0	15	1.0
4	T	Nm	⊙	○	40.0	5.0		1.0
5	T	Nm	⊙	○	50.0	10.0		1.0
6	T	Nm	○	⊙	15.0	4.0		1.0
7	T/A	Nm	⊙	○	23.5	3.0	20	1.0
8	T/A	Nm	⊙	○	44.2	2.0	25	1.0
9	T/A	Nm	⊙	○	60.5	5.0	15	1.0
10	T/A	Nm	⊙	○	50.0	6.0	20	1.0
11	T	Nm	⊙	○	20.0	10.0		1.2
12	T	Nm	○	⊙	70.5	2.0		1.0
13	T	Nm	⊙	○			30	
14	A	Nm	⊙	○			20	
15	A	Nm	○	⊙			30	
16	T	Nm	⊙	○	65.0	20.0		1.0
17	T/A	Nm	⊙	○	44.2	10.0	40	1.0
18	A	Nm	○	⊙			45	
19	T	Nm	⊙	○	43.0	10.0		1.0
20	T	Nm	⊙	○	65.0	20.0		1.0

Read Update

parameter setting software (included)

Basic transmission software (included):

- WIFI LAN real-time communication can receive and monitor 24 wrenches at the same time, data can be automatically sent to the centralized control center software
- Parameters can be set and matched directly to the wrench via USB connection to the software
- Can select whether the wrench only sends qualified data after operation (in accordance with the tolerance)
- The data is stored in the wrench when the wrench is disconnected, and the data is automatically uploaded to the computer after wireless connection, or can be uploaded manually through USB connection
- The data in the software is stored in a file with Txt and can be copied and exported to Excel



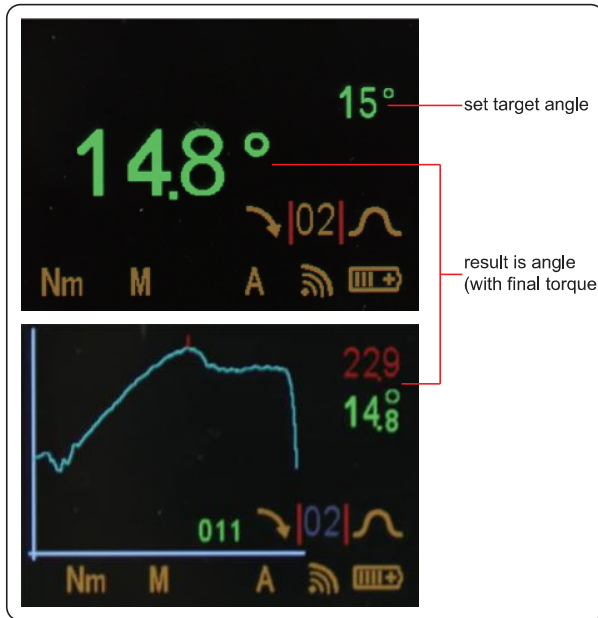
ratchet head (included)

Web framework extension software system (optional):

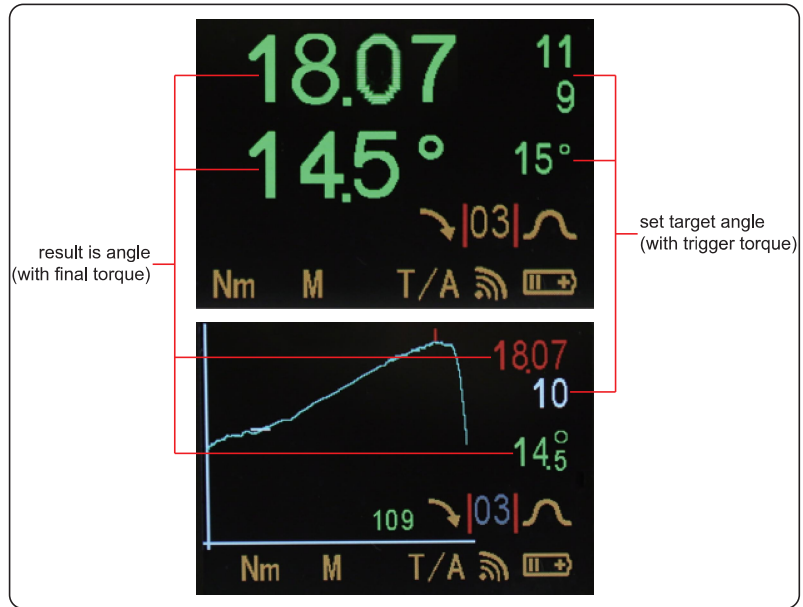
- Details refer to □□ page, same as IST-WPE series

SPECIFICATION

Part No.	Range	Accuracy		Resolution	Socket size (A×B)	Square driver (D)	Standard effective length (L)	Length	Net weight
		Torque	Angle						
IST-WEC10	8.85~88.5lb.in	CW: ±2% CCW: ±3%	±1% of indicated value + ±1° (speed 10°~180°/s) + ±1° (clamping error)	0.01lb.in	.472×.354"	1/4"	9.02"	11.61"	1.10lb
IST-WEC20	17.7~177lb.in			0.1lb.in	.472×.354"	1/4"	9.02"	11.61"	1.10lb
IST-WEC30	26.6~266lb.in			0.1lb.in	.472×.354"	1/4"	13.19"	15.79"	1.34lb
IST-WEC60	53.1~531lb.in			0.1lb.in	.472×.354"	3/8"	13.19"	15.79"	1.34lb
IST-WEC100	7.38~73.8lb.ft			0.01lb.ft	.472×.354"	3/8"	14.37"	17.01"	1.41lb
IST-WEC200	14.8~148lb.ft			0.1lb.ft	.709×.551"	1/2"	17.56"	19.88"	1.81lb
IST-WEC300	22.1~221lb.ft			0.1lb.ft	.709×.551"	1/2"	20.71"	23.03"	2.09lb
IST-WEC400	29.5~295lb.ft			0.1lb.ft	.709×.551"	3/4"	25.47"	27.80"	2.53lb

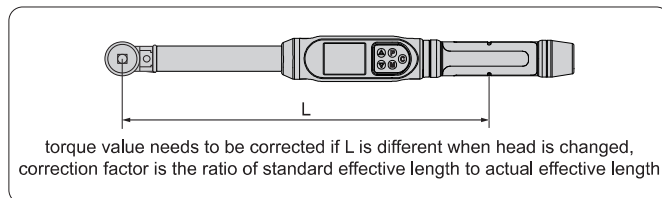


angle mode



one step mode

torque correction



STANDARD DELIVERY

Digital torque wrench	1 pc
Ratchet head	1 pc
Type-C transmission cable	1 pc
Basic transmission software	1 set
Rechargeable lithium battery	2 pcs
Lithium battery charger	1 pc

OPTIONAL ACCESSORY

Interchangeable head	same as IST-WPE series
Web framework extension software system	IST-WPE-TS (same as IST-WPE series)