

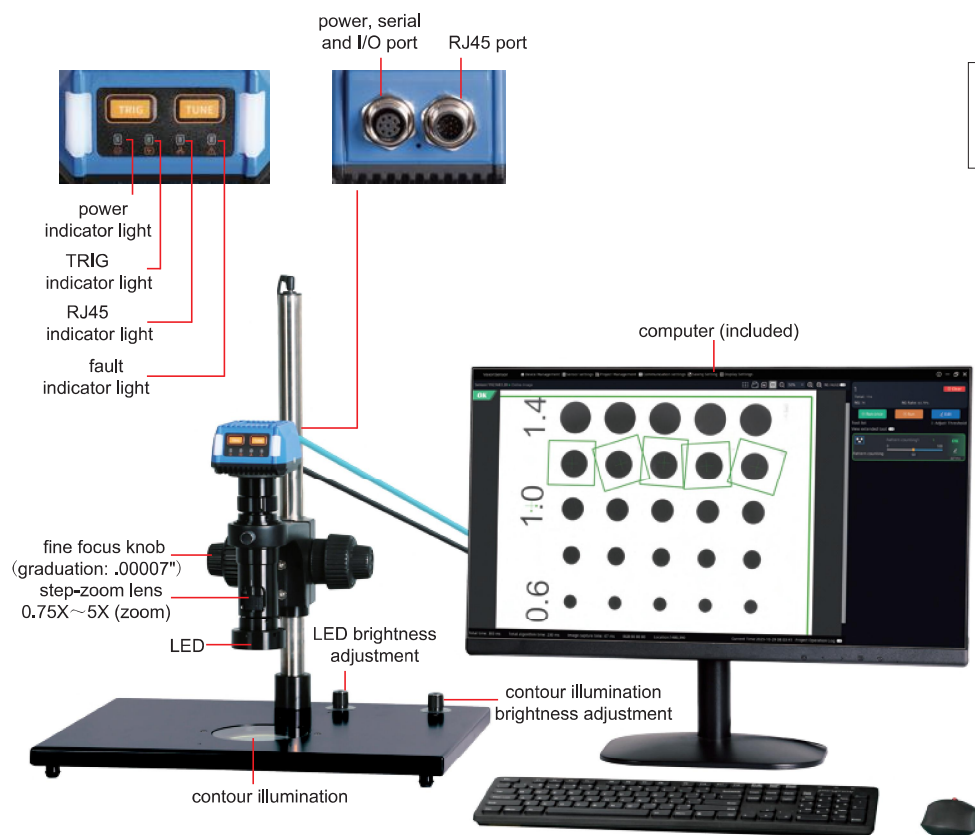
# SMART MICROSCOPE

## PART NO. ISM-DL402

AUTOMATIC  
RECOGNITION

AUTOMATIC  
MEASUREMENT

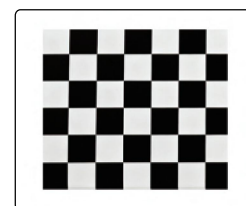
AUTOMATICALLY LOCATE WORKPIECES  
REGARDLESS OF POSITION AND DIRECTION



### camera function

- dimension measurement
- contour matching
- object counting
- character recognition
- color detection
- read QR code

- Industrial vision inspection
- Automatically identify different workpieces
- Automatically locate workpieces regardless of position and direction
- Supporting industrial communication protocols (TCP/IP, ModBus TCP, ModBus RTU, Profinet, Ethernet/IP, Serial, MELSEC/SLMP)
- Including multiple detection tools



2.48×2.48"/63×63mm calibration plate with .039"/1mm graduation (included)

### SPECIFICATION

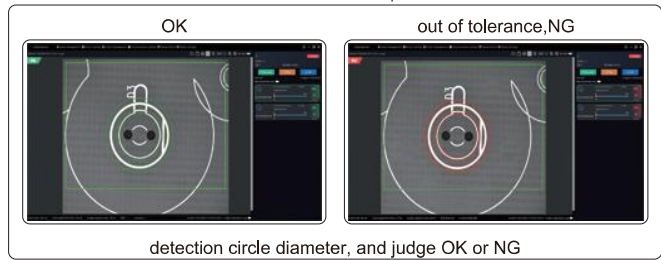
Magnification*	13.5X~90X
View field	.669×.551~.098×.078"
Sensor	1/1.8" CMOS
Pixel	5M
Resolution	2448×2048
Frame rate	30fps
Focus distance	2.755±.078"
Output	RJ45
Power Supply	power adapter
Dimension (L×W×H)	22.44×11.81×16.93"
Net weight	13.227lb

### STANDARD DELIVERY

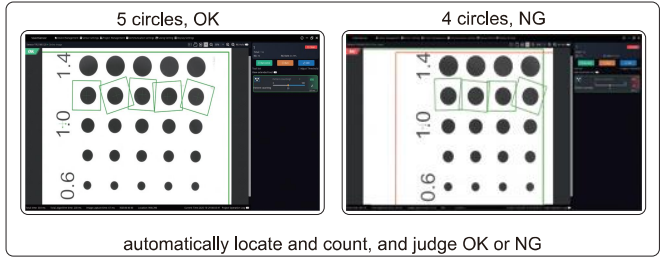
Main unit (with stand)	1pc
0.5X camera adapter	1pc
1X auxiliary objective	1pc
Mouse	1pc
LCD (21.5")	1pc
Computer	1pc
Calibration plate	1pc
Communication cable	1pc
Power cable	1pc
Power adapter	1pc

\*Magnification for using the measuring tool: 13.5X~54X

### Circle diameter inspection



counting



QR code recognition



real-time image.

