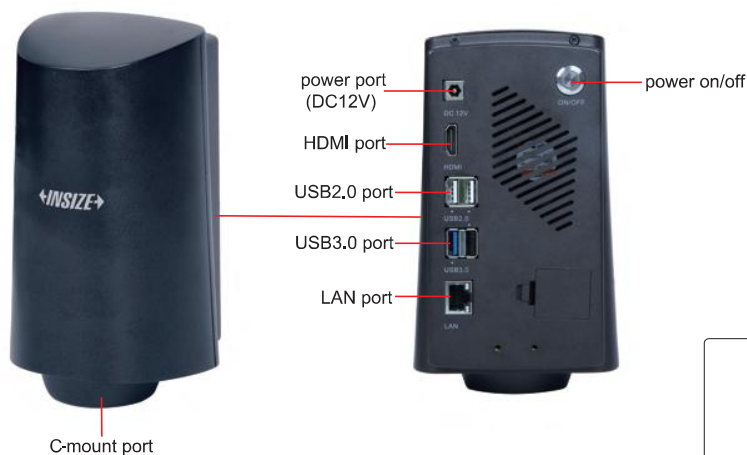


3D LARGE DEPTH OF FIELD CAMERA
PART NO. ISM-DF80

AUTO FOCUS

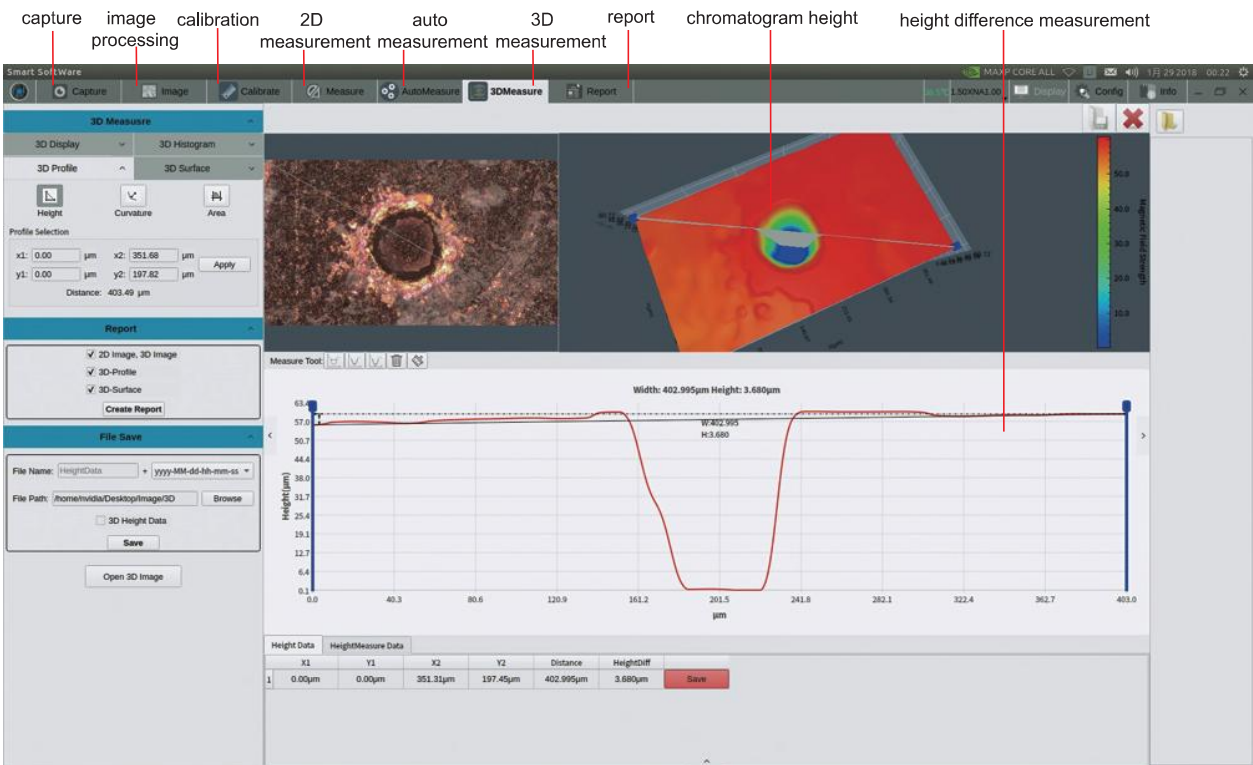
ROTATABLE
OBSERVATION

STEREOSCOPIC 3D IMAGING
AND MEASUREMET



- Built-in measuring software for display, without computer
- 2D observation and measurement, auto focus
- Focus stacking for large depth of field observation
- Constructing 3D imaging and 3D measurement
- Creating report automatic and data can be exported
- Real-time wide dynamic, effectively eliminating reflections on metal surfaces

SOFTWARE



3D IMAGE

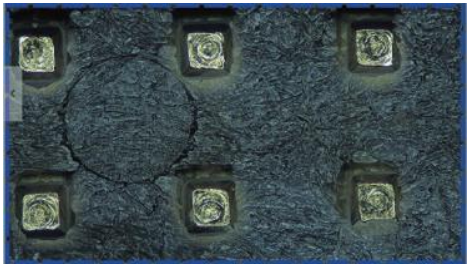
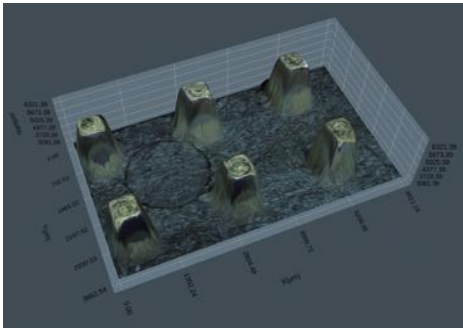


image of focus stacking



3D image of focus stacking

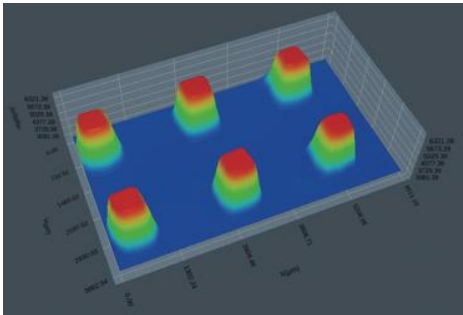
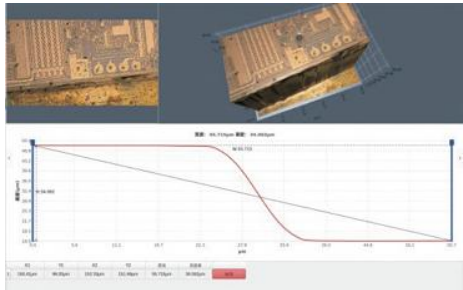


image of chromatogram height

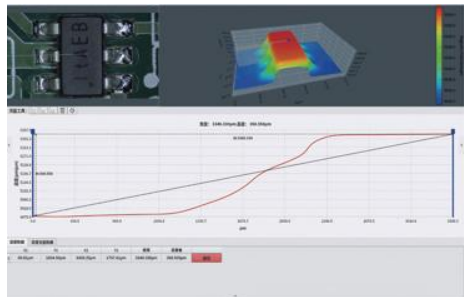
3D MEASUREMENT APPLICATION



measurement of bore height



measurement of height difference of metal parts



measurement of height difference of board

SPECIFICATION

Sensor	1/2" CMOS
Resolution	1920×1080
Pixel	2M
Frame rate	60fps(normal)/30fps(WDR)
Output	HDMI/LAN
Lens connection	C-mount
Exposure	auto: 0.1~16.6ms, manual: 0.0001~1s
Power supply	110~220V, 50/60Hz
Dimension(L×W×H)	3.42×7.12×4.05"
Weight	5.51lb

STANDARD DELIVERY

Camera	1 pc
16G USB flash disk	1 pc
Mouse	1 pc
Keyboard	1 pc
HDMI 2.0 cable	1 pc
Glass calibration rule	1 pc
Galibration block	1 set
Power adapter	1 pc