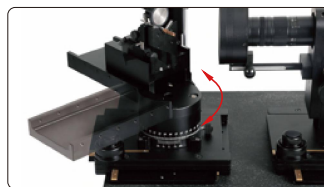
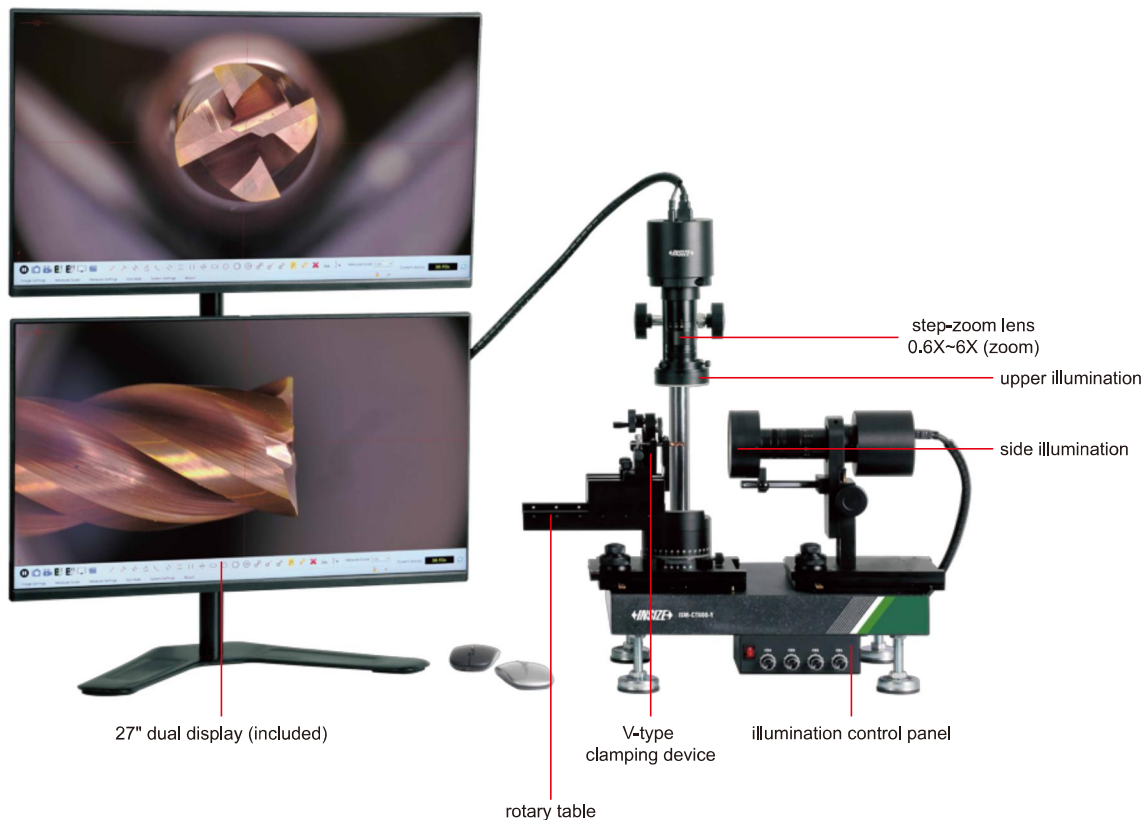


DUAL-DISPLAY CUTTING TOOLS MICROSCOPE PART NO. ISM-CT600

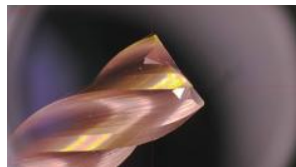
MULTI-ANGLE
OBSERVATION

4K

- 27" dual display, 4K high-definition image
- With a rotary slide table for multi-angle tool observation
- Display cross hairs
- Measure point, line, circle, parallel lines, angle, etc
- Take pictures and videos, saved to USB flash disk



Multi-angle observation of various cutting tools



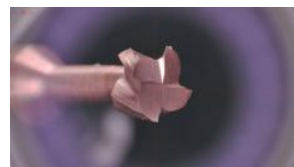
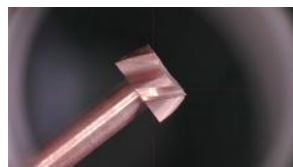
milling cutter



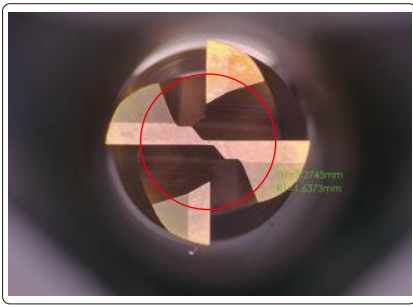
ball cutter



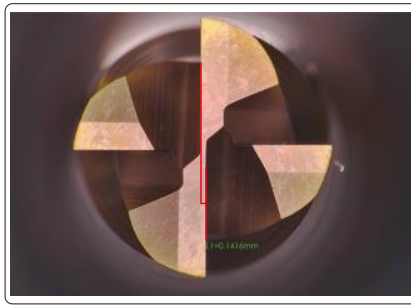
round-nose cutter



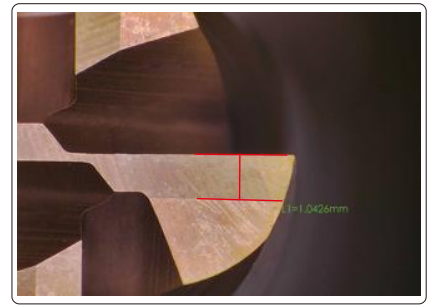
slot milling cutter



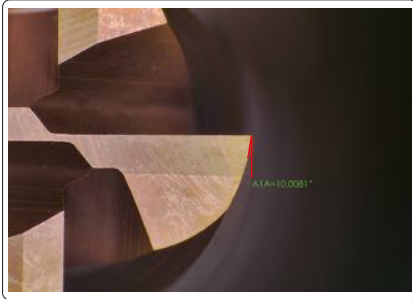
core thickness



center height deviation



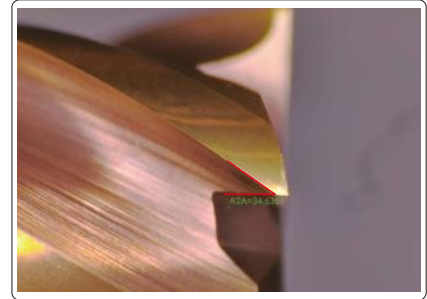
rear blade width



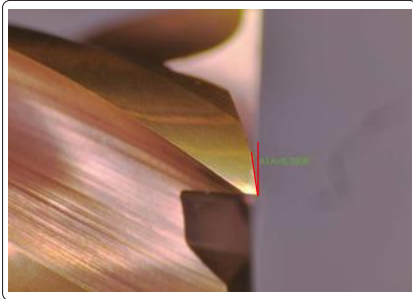
the first rear corner of peripheral flute



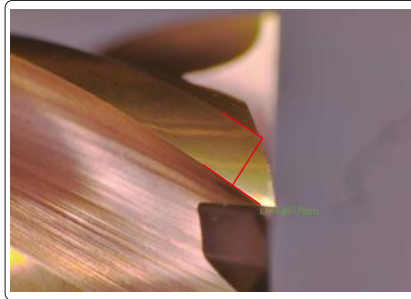
the second rear corner of peripheral flute



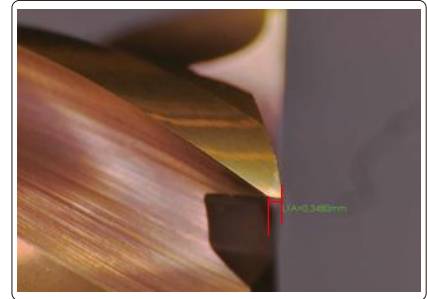
helix angle



the first rear corner of face cutter



the width of first rear corner of peripheral flute



the front corner of face cutter

SPECIFICATION

Cutting tools range	.12~.79" DIA, length .79~2.36"
Lens	step-zoom lens (0.6X~6X)*
Resolution	3840×2160
View field	.06×.10~.55×.98"
Focus distance	3.15"
Magnification	23X~230X (on 27" monitor)
Measuring accuracy	±.0008"
Output	HDMI/USB
Rotary table	sliding distance: 3.54", rotation range: 0~220°
Power supply	100~240V, 50/60Hz
Dimension (L×W×H)	45.28×15.75×34.65"
Net Weight	94.8lb

*When lens magnification is 0.6X~1X, measurement is not recommended

STANDARD DELIVERY

Main unit	1pc
Display	2pcs
Mouse	2pcs
Glass calibration plate	1pc
HDMI cable	2pcs