

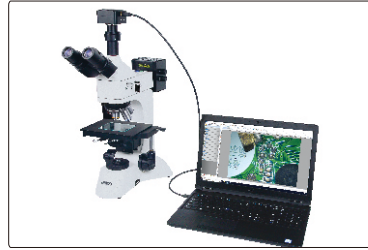
USB CAMERA AND SOFTWARE PART NO. ISM-CM63

**ATTENTION: ADAPTERS ARE NEEDED
ACCORDING TO MICROSCOPES**



C-mount port

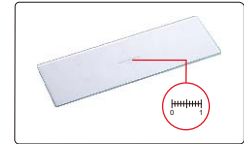
application



adapter 0.5X (optional)



glass calibration rule
(included, graduation 0.1mm)



- To be used with computers
- Sony Exmor back-illuminated CMOS sensor
- USB3.0 transfer
- Automatic exposure, gain adjustment, white balance, chrominance adjustment, saturation adjustment, gamma correction, luminance adjustment, contrast adjustment

Software (included)

selectable resolution

histogram
(quantify the distribution of color and brightness)

measurement items

real time gray calibration

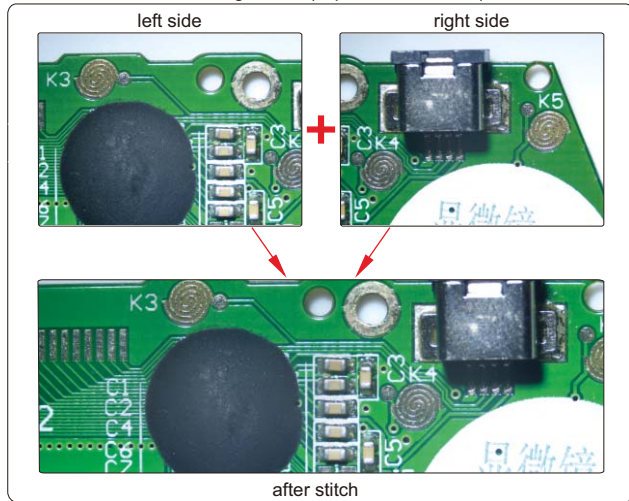
black balance
(reduce color difference)

flat field correction
(reduce brightness difference)













dark field correction
(reduce thermal noise)

The software can control image completely, including measurement, image stitch, extend focus depth, image gray processing, RGB histogram observation, image color sampling, 3D plot(3D representation of image intensity), image exposure, white balance, black balance, image bit depth, flat field correction and dark field correction, etc.

Automatic image stitch (expand field of view)



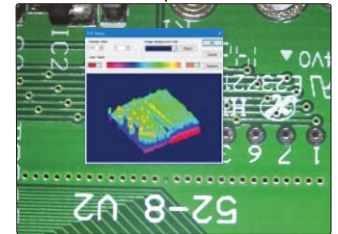
Measurement tools:

-  measure length of line or distance between two points
-  measure rectangle
-  measure angle
-  measure radius, girth and area of circle
-  measure axis lengths, girth and area of ellipse
-  calibration
-  measure distance between two parallel lines
-  measure width and diameter of ring
-  measure diameter, length, perimeter angle of arc
-  measure area of polygon
-  measure center distance between two circles
-  measure length of open curve

Extend focus depth

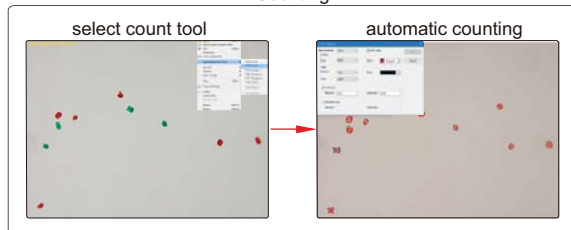


3D plot

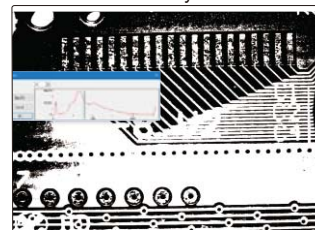


Visualize the distribution of image brightness and color

Counting



Binary



separate target and background

SPECIFICATION

Sensor(back-up)	1/1.8" CMOS
Resolution	6.3M
Pixel	3072×2048
Single pixel size	.00009×.00009"
Spectral range	380-650nm (with infrared cut filter)
Frame rate	30fps
Sampling average	1×1
Exposure time	0.1ms~15s
Power supply	USB port
Weight	.88lb

COMPUTER REQUIREMENT

Operation system	Windows/7/8/10
CPU	Intel Core 2 2.8Hz or above
Memery	2GB or above
USB port	USB3.0 (Recommand) or USB2.0
Display	17" or above

STANDAER DELIVERY

Camera (USB cable included)	1 pc
Glass calibration rule (graduation 0.1 mm)	1 pc
Software	1 pc

OPTIONAL ACCESSORY

Adapter 0.5X	ISM-MAS-ADAPTER
--------------	-----------------