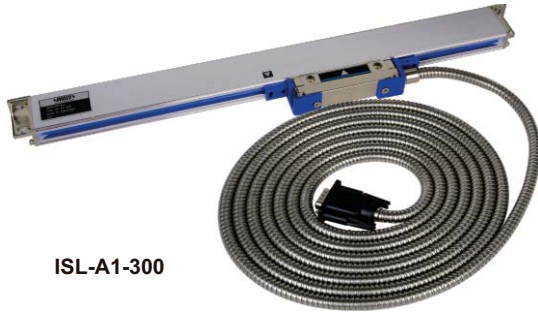
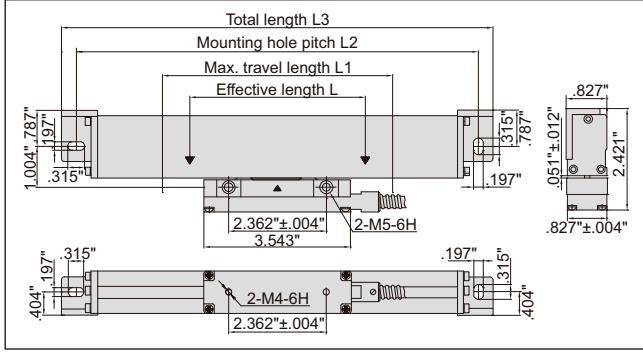


# LINEAR SCALES

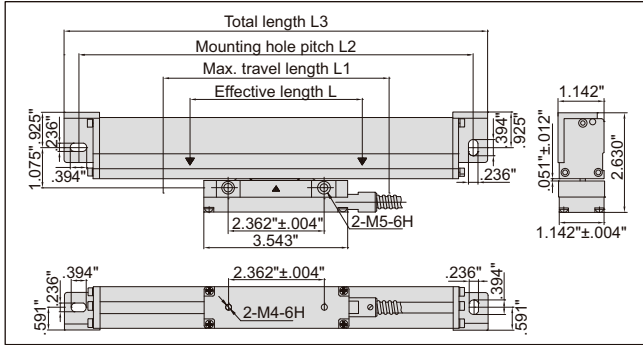


ISL-A1-300

## Series ISL-A1 and ISL-A5

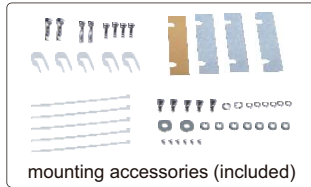
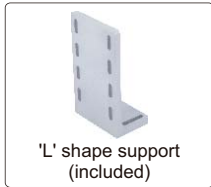


## Series ISL-B5



## STANDARD DELIVERY

Main unit	1 pc
'L' shape support	1 pc
Anti-dust cover	1 pc
Plain base	1 pc (for L≥60")
Mounting accessories	1 package



Effective length (L)	Part No.		
	Series ISL-A1 Thin type	Series ISL-A5 Thin type	Series ISL-B5 Thick type
2"/50mm	ISL-A1-50	ISL-A5-50	ISL-B5-50
4"/100mm	ISL-A1-100	ISL-A5-100	ISL-B5-100
6"/150mm	ISL-A1-150	ISL-A5-150	ISL-B5-150
8"/200mm	ISL-A1-200	ISL-A5-200	ISL-B5-200
10"/250mm	ISL-A1-250	ISL-A5-250	ISL-B5-250
12"/300mm	ISL-A1-300	ISL-A5-300	ISL-B5-300
14"/350mm	ISL-A1-350	ISL-A5-350	ISL-B5-350
16"/400mm	ISL-A1-400	ISL-A5-400	ISL-B5-400
18"/450mm	ISL-A1-450	ISL-A5-450	ISL-B5-450
20"/500mm	ISL-A1-500	ISL-A5-500	ISL-B5-500
22"/550mm	ISL-A1-550	ISL-A5-550	ISL-B5-550
24"/600mm	ISL-A1-600	ISL-A5-600	ISL-B5-600
26"/650mm	ISL-A1-650	ISL-A5-650	ISL-B5-650
28"/700mm	ISL-A1-700	ISL-A5-700	ISL-B5-700
30"/750mm	ISL-A1-750	ISL-A5-750	ISL-B5-750
32"/800mm	ISL-A1-800	ISL-A5-800	ISL-B5-800
34"/850mm	ISL-A1-850	ISL-A5-850	ISL-B5-850
36"/900mm	ISL-A1-900	ISL-A5-900	ISL-B5-900
38"/950mm	ISL-A1-950	ISL-A5-950	ISL-B5-950
40"/1000mm	ISL-A1-1000	ISL-A5-1000	ISL-B5-1000
44"/1100mm		ISL-A5-1100	ISL-B5-1100
48"/1200mm			ISL-B5-1200
52"/1300mm			ISL-B5-1300
56"/1400mm			ISL-B5-1400
60"/1500mm			ISL-B5-1500
64"/1600mm			ISL-B5-1600
68"/1700mm			ISL-B5-1700
72"/1800mm			ISL-B5-1800
76"/1900mm			ISL-B5-1900
80"/2000mm			ISL-B5-2000
84"/2100mm			ISL-B5-2100
88"/2200mm			ISL-B5-2200
92"/2300mm			ISL-B5-2300
96"/2400mm			ISL-B5-2400
100"/2500mm			ISL-B5-2500
104"/2600mm			ISL-B5-2600
108"/2700mm			ISL-B5-2700
112"/2800mm			ISL-B5-2800
116"/2900mm			ISL-B5-2900
120"/3000mm			ISL-B5-3000
124"/3100mm			ISL-B5-3100
128"/3200mm			ISL-B5-3200

## SPECIFICATION

Part No.	Series ISL-A1		Series ISL-A5		Series ISL-B5	
L1 (inch)	L+1.18"(L<38")	L+1.97"(L≥38")	L+1.18"(L<38")	L+1.97"(L≥38")	L+1.18"(L<38")	L+1.97"(L≥38")
L2 (inch)	L+5.20"(L<38")	L+5.98"(L≥38")	L+5.20"(L<38")	L+5.98"(L≥38")	L+5.35"(L<38")	L+6.14"(L≥38")
L3 (inch)	L+5.87"(L<38")	L+6.65"(L≥38")	L+5.87"(L<38")	L+6.65"(L≥38")	L+6.06"(L<38")	L+6.85"(L≥38")
Resolution	.00005"		.0002"		.0002"	
Max. response speed	164ft/min		295ft/min		196ft/min	
Scale grating pitch	787μm					
Scale reference point pitch	1.97"					
Accuracy	±(197+5L)μm L is the effective length in inch					
Cable length	140" (L: 2-38"), 200" (L: 40-60"), 400" (L: 64-128")					