

INTELLIGENT ELECTRIC SCREWDRIVERS
(CURRENT CONTROL)

ATTENTION: TORQUE TESTERS
ARE NEEDED FOR CALIBRATION

ATTENTION: SPEED SHOULD BE BELOW
100RPM WHEN TIGHTENING IS ENDED



HES-E152

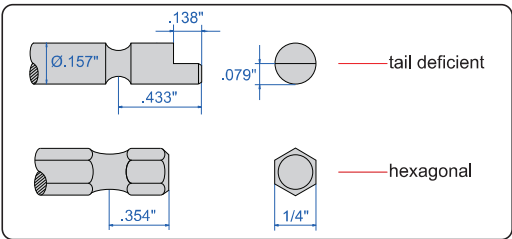


HES-E403



HES-E901A

- Highly efficient heat dissipation setting, ultra-low noise handling
- Permanent magnet synchronous servo motor and high-precision reducer power transmission mechanism
- High-precision angle sensor (resolution 1°) and two-color LED indication of locking status
- The safety level conforms to the relevant provisions of GB3883/IEC60745 and other standards
- 12 task modes, each task can be configured with 8 different torque parameters
- Locked data is stored in EXCEL on the hard disk for 600 days
- Built-in servo drive for precise control of torque, angle and speed
- Provide graphical tool for process optimization and diagnostic
- Provide programmable IO and RS485 communication port for process control and data transmission
- Physical buttons for assisted operation and they are monitored by LED lights



screwdriver head (optional)

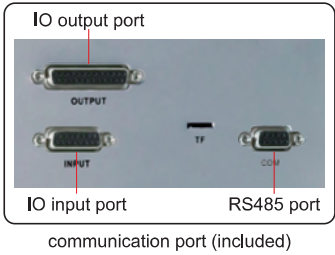
(can be customized: cross, flathead, hexagonal, star-shaped)



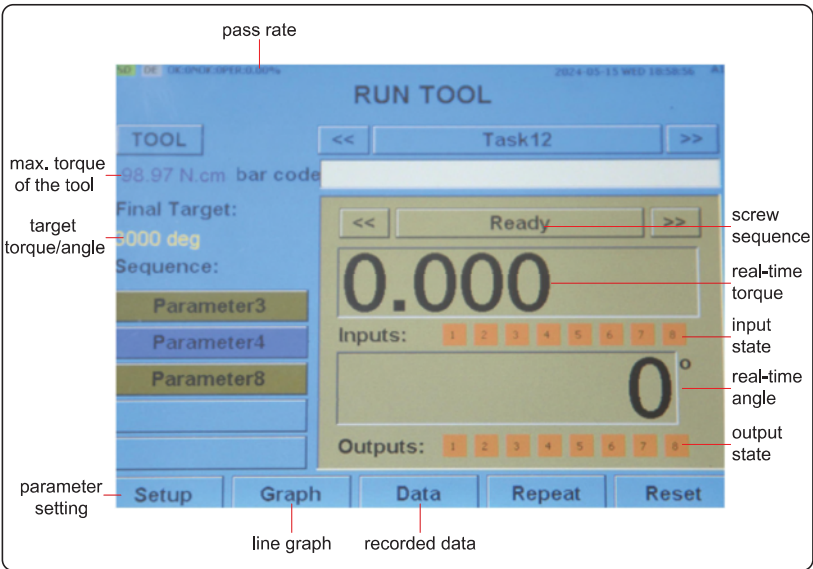
controller
type A



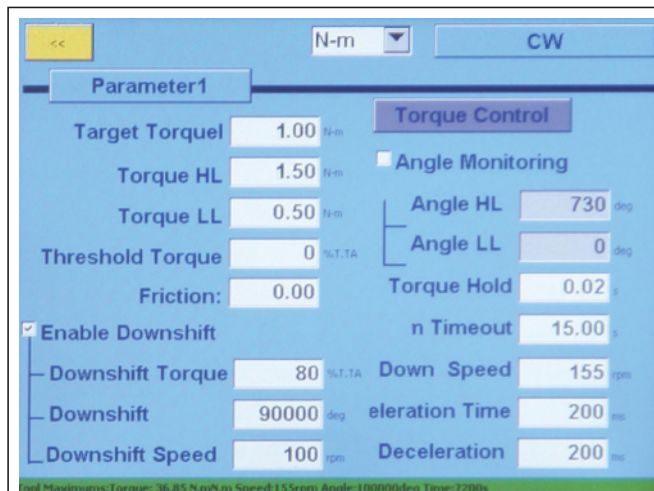
controller
type B



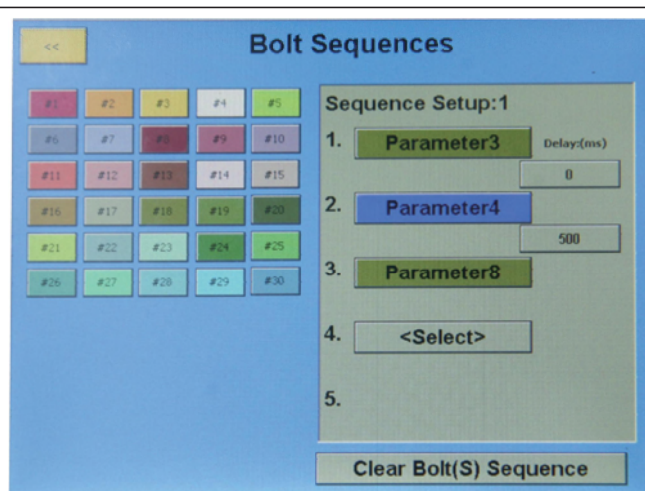
balance arm (optional)



controller (included)



interface of tightening parameter setting



interface of screw sequence matching parameters

SPECIFICATION

Part No.		HES-E151	HES-E152	HES-E401	HES-E402	HES-E403	HES-E404
Torque range		0.09~1.15lbf.in	0.27~4.87lbf.in	0.18~2.04lbf.in	1.33~7.97lbf.in	1.77~10.62lbf.in	4.42~14.16lbf.in
		0.01~0.13N.m	0.06~0.55N.m	0.02~0.23N.m	0.15~0.90N.m	0.20~1.20N.m	0.50~1.60N.m
Motor power		DC15W			DC40W		
Max. speed		5000rpm	1200rpm	5000rpm	1200rpm	1000rpm	800rpm
Applicable screw outside diameter		.039~.067"	.055~.098"	.039~.079"	.079~.118"	.079~.138"	.098~.157"
Applicable screwdriver head		.157"DIA tail deficient				1/4" hexagonal	
Controller		type A					
Power supply		AC 85~264V, 47~63HZ					
Display operation interface		touch screen menu operation mode, 3 function buttons+3 LED indicators					
Torque accuracy		±5% at 30%~80% of maximum output torque, ±8% in other range					
Dimension	electric screwdriver	9.53×2.09×1.38"		8.43×2.54×1.50"	9.09×2.54×1.50"		
	controller	5.96×7.31×8.70"					
Weight	electric screwdriver	.66lb		.88lb	1.10lb		1.32lb
	controller	7.7lb					

Part No.	HES-E901A-U	HES-E902A-U	HES-E903A-U	HES-E901B-U	HES-E902B-U	HES-E903B-U
Torque range	0.88~6.20lbf.in	5.31~21.20lbf.in	5.31~26.55lbf.in	1.77~10.62lbf.in	7.08~38.00lbf.in	8.85~48.68lbf.in
	0.10~0.70N.m	0.60~2.40N.m	0.60~3.00N.m	0.20~1.20N.m	0.80~4.30N.m	1.00~5.50N.m
Motor power	DC90W			AC90W		
Max. speed	5000rpm	1200rpm	1000rpm	5000rpm	1500rpm	1200rpm
Applicable screw outside diameter	.079~.098"	.138~.177"	.138~.197"	.079~.138"	.138~.217"	.157~.236"
Applicable screwdriver head	1/4" hexagonal					
Controller	type B					
Power supply	AC 110V±10%, 50~60HZ					
Display operation interface	touch screen menu operation mode, 3 function buttons+3 LED indicators					
Torque accuracy	±5% at 30%~80% of maximum output torque, ±8% in other range					
Dimension	electric screwdriver	12.48×2.34×1.87"		9.25×6.30×13.58"		
	controller	8.27×6.30×13.58"				
Weight	electric screwdriver	1.98lb	2.34lb	1.98lb	2.34lb	
	controller	12.1lb				

STANDARD DELIVERY

Electric screwdriver	1pc
Controller	1pc
Cross screwdriver head	1pc
Tool connection cable	1pc
USB transmission cable	1pc

OPTIONAL ACCESSORY

.157"DIA tail deficient screwdriver head	
1/4" hexagonal screwdriver head	
Balance arm	HES-E-X *
QR code scanner	7328-SCAN

*Not suitable for HES-E151, HES-E152