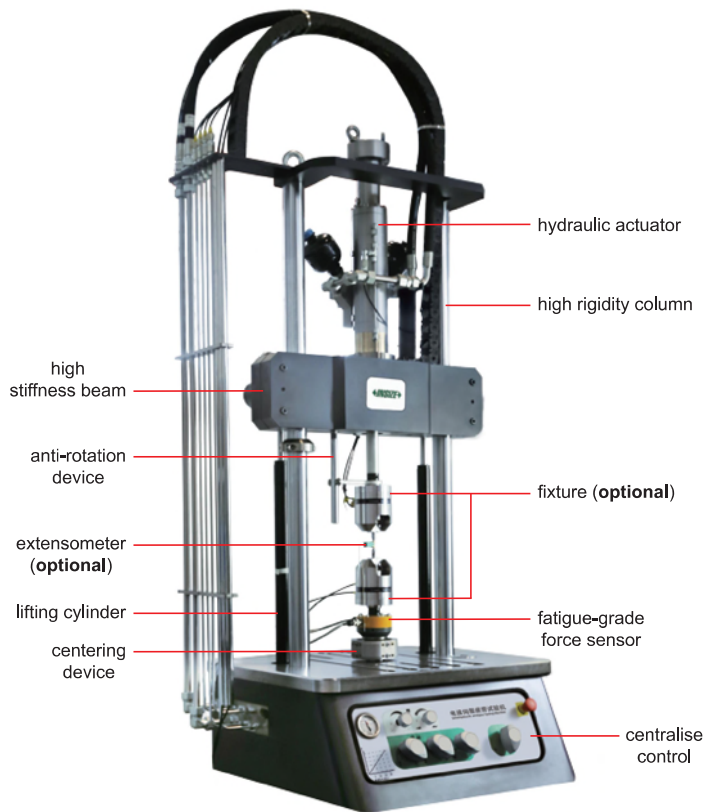
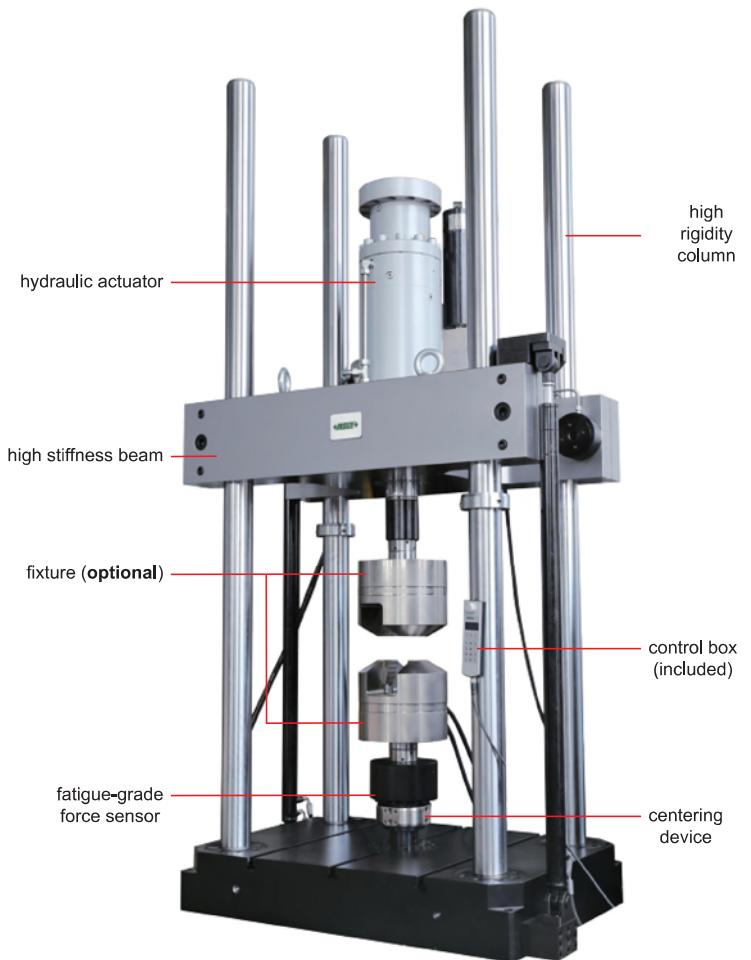


SERVOHYDRAULIC FATIGUE TESTING MACHINES (CYLINDER UP-MOUNTED)

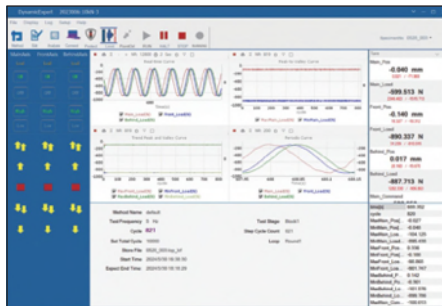
ATTENTION: CUSTOMIZED
ACCORDING TO TEST METHOD



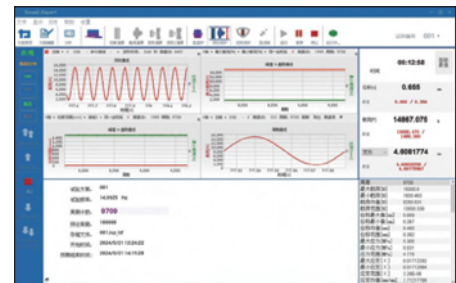
FTM-U25-U



FTM-U250-U



software (included)



software (included)

- According to ASTM D3479, ASTM D7615, GB/T 3075, HB5287, GB/T 15248, GB/T 6398, GB/T 4161, GB/T21143, ASTM 1290, ASTM-E399, JIG 556-2011
- Suitable for tensile, compression, bending, tension-tension, compression-compression, tension-compression and other mechanical properties of the test
- Suitable for fatigue testing of composite materials, steel, aluminium alloys, super alloys, etc.

SPECIFICATION

Part No.	FTM-U10-U	FTM-U25-U	FTM-U50-U	FTM-U100-U
Max. test force	10kN	25kN	50kN	100kN
Accuracy of static force measurement	±0.5% of indicated value			
Accuracy of dynamic force measurement	±2% of indicated value			
Range of test force	0.5%~100%FS			
Actuator stroke *	±75mm			
Accuracy of displacement measurement	linearity error <40μm, repeatability <0.001%FS			
Range of frequency	0~100Hz			
Concentricity	≤5%			
Vertical test space *	43.31"	43.31"	44.09"	44.09"
Effective test width *	18.11"	18.11"	21.26"	21.26"
Test waveform	sine wave, square wave, triangle wave, ramp wave, random wave, spectral loading, sweep frequency, etc.			
Stiffness	1.25×10 ⁸ N/m		5×10 ⁸ N/m	
Dimension (W x D x H)	31.50×19.69×98.43"	31.50×19.69×98.43"	34.25×21.65×78.74"	34.25×21.65×78.74"
Weight	330.69lb	330.69lb	2425.08lb	2976.24lb
Power supply	AC 480V, 3Ø, 60Hz			

SPECIFICATION

Part No.	FTM-U250-U	FTM-U500-U	FTM-U1000-U	FTM-U2500-U
Max. test force	250kN	500kN	1000kN	2500kN
Accuracy of static force measurement	±0.5% of indicated value			
Accuracy of dynamic force measurement	±2% of indicated value			
Range of test force	0.5%~100%FS			
Actuator stroke *	±75mm			
Accuracy of displacement measurement	linearity error <40μm, repeatability <0.001%FS			
Range of frequency	0~100Hz			
Concentricity	≤5%			
Vertical test space *	48.62"	78.74"	102.36"	118.11"
Effective test width *	25.59"	30.71"	23.62"	33.46"
Test waveform	sine wave, square wave, triangle wave, ramp wave, random wave, spectral loading, sweep frequency, etc.			
Stiffness	6.5×10 ⁸ N/m	8×10 ⁸ N/m	2.1×10 ⁹ N/m	4.2×10 ⁹ N/m
Dimension (W x D x H)	39.37×25.20×125.98"	39.37×25.20×145.67"	43.31×25.59×228.35"	59.06×33.46×255.91"
Weight	4519.48lb	13668.66lb	18739.29lb	27557.78lb
Power supply	AC 480V, 3Ø, 60Hz			

*Can be customized according to test requirements

WAVEFORM OF WORKING CONDITION

(page□□)

STANDARD DELIVERY

Main unit	1 pc
Hydraulic oil source	1 set
Main circulating cooling water system	1 set
Control box	1 pc
Measuring software	1 set
Computer	1 pc
Printer	1 pc

OPTIONAL ACCESSORY

Fixture	customized
Extensometer	
High-temperature extensometer	
High and low temperature test chamber	
Temperature and humidity test chamber	
High-temperature furnace	
Security door	
Video extensometer	UTM-M series