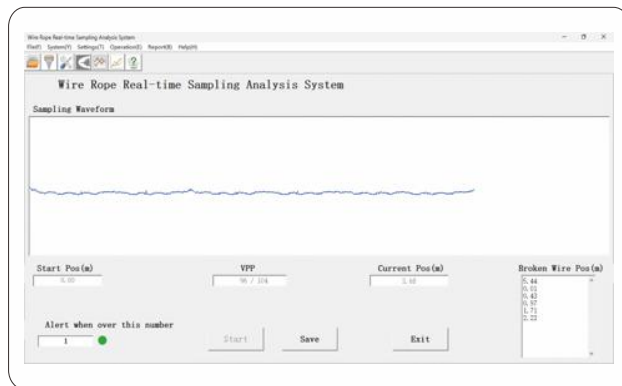
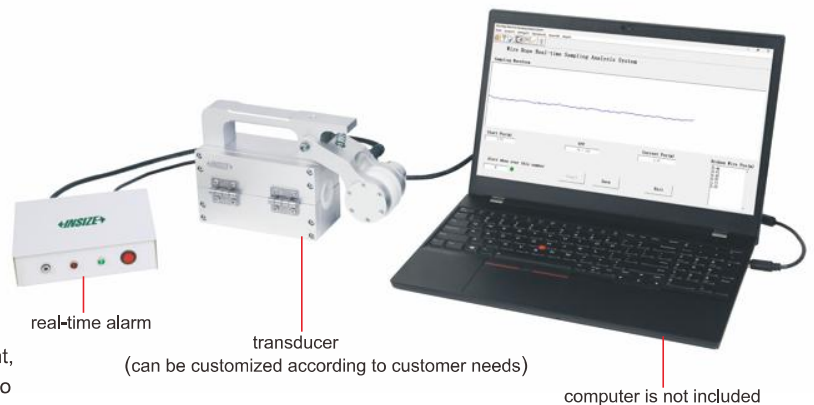


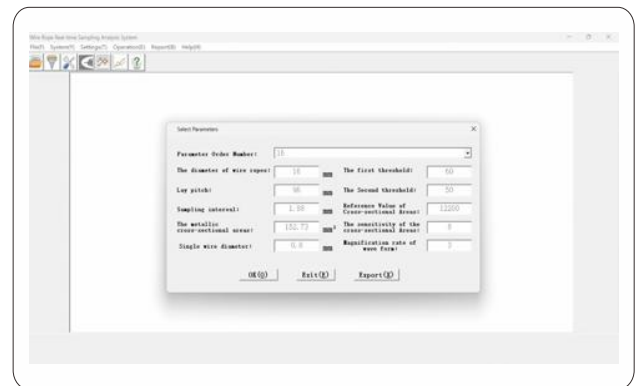
WIRE ROPE FLAW DETECTOR PART NO. EST

CAN BE CUSTOMIZED ACCORDING
TO CUSTOMER NEEDS

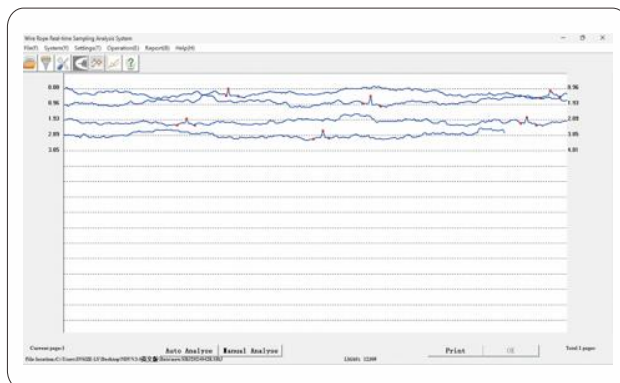
- On-line detection of wire rope internal and external wire breakage, abrasion, corrosion, deformation, loose strands, jumping wire, material changes and other defects
- The test results report can meet the standards of different industries at the same time with the number of broken wires and broken wires broken area and the ratio of the total area of broken wires in the form of display
- The use of computer USB interface direct sampling processing analysis, with online sound and light alarms and real-time display of the results of the function
- The sensor's circular structure, circumferential encirclement, and axial magnetization instantly magnetize the wire rope to saturation
- Stable work, reliable performance, high detection precision, strong anti-interference performance, accurate data
- Suitable for use in mines, ropeways, lifting equipment, elevators, port machinery, cable-stayed bridges, etc



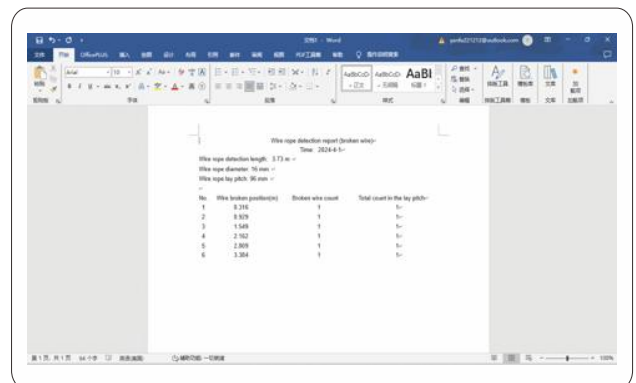
real-time detection alarm



parameter setting



sampling analysis



test report

SPECIFICATION

Detection range	.06~11.81" DIA (can be customized according to customer needs)
Detection efficiency	0~.24"/s (relative speed between sensor and wire rope)
Optimal detection efficiency	.01~.040"/s
Allowable interval	0~.60" (allowable interval between guide sleeve and wire rope)
Optimal interval	.08~.24"
Qualitative accuracy of wire breakage	99.99%
Tolerance on the number of broken wires	allow one root or one equivalent of algorithmic differences
Sensitivity error	±0.055%
Accuracy error	±0.2%
Length error	±0.2%
Power supply	power adapter
Operation condition	temperature: -4°F~122°F humidity: ≤85% pressure: 12.47psi~15.37psi
Weight	<22.05lb

STANDARD DELIVERY

Main unit (transducer)	1pc
Real-time alarm	1pc
9355 signal connection line	1pc
USB transfer cable	1pc
Flexible traction safety rope	1pc
Software USB flash disk	1pc