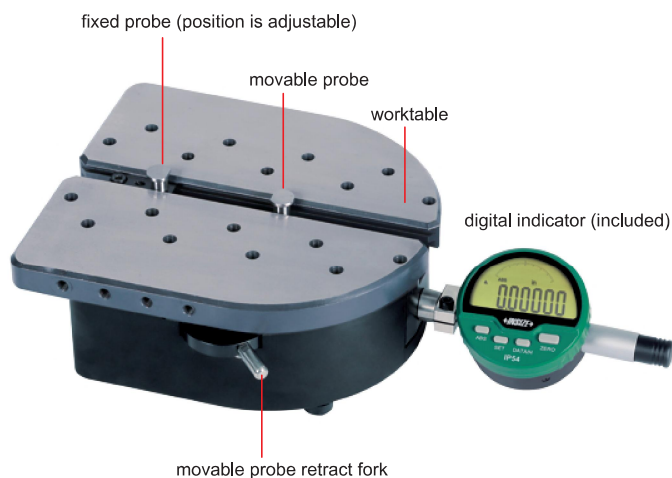


UNIVERSAL COMPARISON MEASURING BENCH

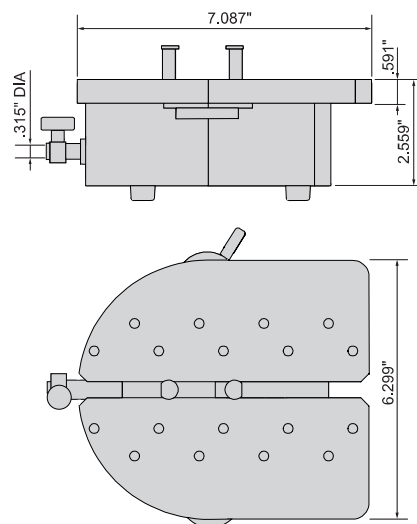
ATTENTION: DIGITAL INDICATOR USES RECHARGEABLE BATTERY, FOR 30 HOURS CONTINUOUS WORKING

DIGITAL INDICATOR WITH IP54 DUST/WATERPROOF

DIGITAL INDICATOR USES ABSOLUTE ENCODER, THE ORIGINAL DATA REMAINS AFTER POWER OFF

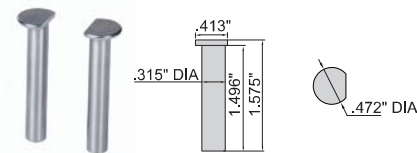


6848-145



- Switchable measurement direction for measuring internal and external diameter
- Adjustable measuring force .45-1.125lbf
- Movable probe travel $\pm .394$ "
- Digital indicator with IP54 dust/waterproof (when cap is lifted, no dust/waterproof)
- Digital indicator uses absolute encoder, the original data remains after power off
- Digital indicator uses rechargeable battery, for 30 hours continuous working
- Digital indicator with automatic power off
- Digital indicator reading in digital and analog
- Digital indicator display can be rotated by 270°
- Digital indicator button function: on/off, zero setting, data preset, tolerance Go and No-Go display, data hold, mm/inch, measuring direction change, max./min./TIR, absolute/incremental measurement, data output
- Data output cable (keyboard format) is included in digital indicator

Probes (included, supplied in pair)

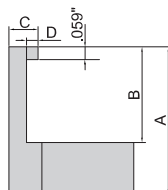


Part No.	Range of external diameter**	Range of internal diameter**	Resolution	Accuracy	Any $\pm .039$ accuracy*	Repeatability
6848-145	0-4" (0-100mm)	1-4.7" (25-120mm)	.00002"/0.0005mm	.00020"	.00008"	.00008"

* After set zero, accuracy is .00008" within range of $\pm .039$ " from zero position

** The measuring range will change according to different measuring probes

Internal groove probes (optional, supplied in pair)



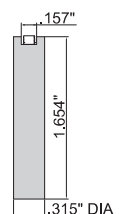
Part No.	Minimum Measuring Internal Diameter	A	B	C	D
6848-S201*	.157"	.787"	.512"	.150"	.055"
6848-S202*	.276"	.945"	.709"	.236"	.087"
6848-S203*	.472"	1.102"	.866"	.236"	.079"

* It is necessary to use internal groove probe holder (part no. 6848-T201)

Internal groove probe holders (optional, supplied in pair)



Part No.
6848-T201



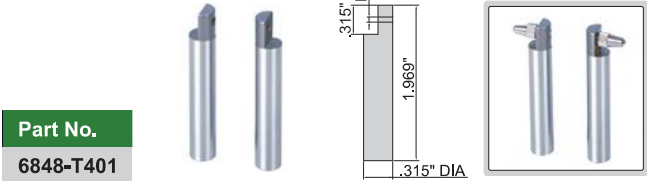
Application



Disk probes
(optional, supplied in pair)



Probe holders
(optional, supplied in pair)



Probes (optional, supplied in single)
Part no. 6282*



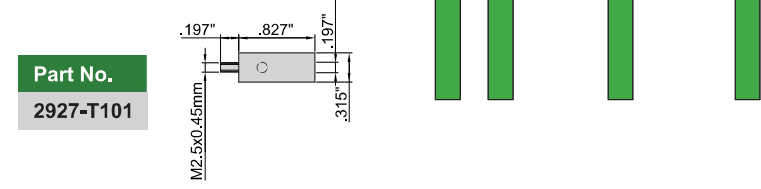
* It is necessary to use probe holders(part no. 6848-T401) for these probes

Multifunctional probes (optional, supplied in pair)
Part no. 7392*



* It is necessary to use probe holders(part no. 6848-T401) and probe sleeve(part no. 2927-T101) for these probes

Probe sleeve
(optional, supplied in pair)



Ball probes (optional, supplied in pair)
Part no. 7391*



* It is necessary to use probe holders(part no. 6848-T401) and probe sleeve(part no. 2927-T101) for these probes

External thread probes
(optional, supplied in pair)
Part no. 7381*



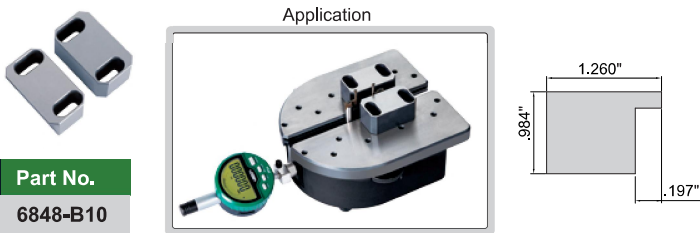
* It is necessary to use probe holders(part no. 6848-T401) and probe sleeve(part no. 2927-T101) for these probes

Internal thread probes
(optional, supplied in pair)
Part no. 7321*



* It is necessary to use probe holders(part no. 6848-T401) and probe sleeve(part no. 2927-T101) for these probes

Spacer blocks (optional, supplied in pair)



Positioning plate(optional)

