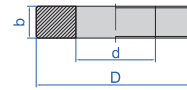


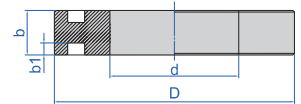


6313-0D8

- For zero setting of inside micrometers, three points internal micrometers and bore gages
- The size marked on the setting ring is checked at the direction of the marking line
- Size difference is the difference between the ordered size and the size marked on the setting ring when supplied. for example, the ordered size is .200", the size marked on the setting ring when supplied may be .20008"
- Supplied with manufacturer inspection certificate



1.588-3.937" DIA



3.937-16" DIA

Diameter d *	b	D (DIA)	Size difference	Roundness and cylindricity
.059-.098"	.157"	.866"	±.00039"	.000012"
.098-.118"	.197"	.866"	±.00039"	.000012"
.118-.197"	.197"	.866"	±.00039"	.000016"
.197-.394"	.315"	1.260"	±.00039"	.000016"
.394-.591"	.394"	1.496"	±.00039"	.000020"
.591-.709"	.472"	1.772"	±.00039"	.000020"
.709-.787"	.472"	1.772"	±.00039"	.000024"
.787-.984"	.551"	2.087"	±.00039"	.000024"
.984-1.181"	.630"	2.480"	±.00039"	.000024"
1.181-1.260"	.630"	2.480"	±.00039"	.000028"
1.260-1.575"	.709"	2.795"	±.00039"	.000028"
1.575-1.969"	.787"	3.346"	±.00039"	.000028"
1.969-2.362"	.787"	3.937"	±.00039"	.000031"
2.362-2.756"	.945"	4.409"	±.00039"	.000031"
2.756-3.150"	.945"	4.921"	±.00039"	.000031"
3.150-3.543"	.945"	5.512"	±.00039"	.000039"
3.543-3.937"	.945"	6.300"	±.00039"	.000039"

* For example .709-.787" means .709" DIA < diameters ≤ 787" DIA

Diameter d *	b	b1	D (DIA)	Size difference	Roundness and cylindricity
3.937-4.331"	1.181"	.315"	6.457"	±.00039"	.000039"
4.331-5.118"	1.339"	.394"	7.559"	±.00039"	.000039"
5.118-5.906"	1.339"	.394"	8.661"	±.00039"	.000047"
5.906-6.693"	1.417"	.394"	9.764"	±.00039"	.000059"
6.693-7.480"	1.417"	.394"	10.866"	±.00039"	.000059"
7.480-8.268"	1.496"	.394"	11.811"	±.00039"	.000059"
8.268-9.055"	1.496"	.394"	12.756"	±.00039"	.000098"
9.055-9.843"	1.575"	.472"	13.780"	±.00039"	.000098"
9.843-10.630"	1.575"	.472"	14.764"	±.00039"	.000118"
10.630-11.417"	1.654"	.472"	15.748"	±.00039"	.000118"
11.417-11.811"	1.654"	.472"	16.732"	±.00039"	.000118"
11.811-12.598"	1.654"	.472"	16.929"	±.00039"	.000157"
12.598-12.992"	1.654"	.472"	17.323"	±.00039"	.000157"
12.992-13.386"	1.654"	.472"	17.717"	±.00039"	.000157"
13.386-13.780"	1.654"	.472"	18.110"	±.00039"	.000157"
13.780-14.173"	1.654"	.472"	18.504"	±.00039"	.000157"
14.173-14.567"	1.654"	.472"	18.898"	±.00039"	.000157"
14.567-14.961"	1.654"	.472"	19.291"	±.00039"	.000157"
14.961-15.354"	1.654"	.472"	19.685"	±.00039"	.000157"
15.354-16"	1.654"	.472"	20.079"	±.00039"	.000157"

Part No.	Diameter
6313-1H16	1/16" DIA
6313-3H32	3/32" DIA
6313-1H8	1/8" DIA
6313-5H32	5/32" DIA
6313-3H16	3/16" DIA
6313-7H32	7/32" DIA
6313-1H4	1/4" DIA
6313-9H32	9/32" DIA
6313-5H16	5/16" DIA
6313-11H32	11/32" DIA
6313-3H8	3/8" DIA
6313-13H32	13/32" DIA
6313-7H16	7/16" DIA
6313-15H32	15/32" DIA
6313-1H2	1/2" DIA
6313-17H32	17/32" DIA
6313-9H16	9/16" DIA
6313-19H32	19/32" DIA

Part No.	Diameter
6313-5H8	5/8" DIA
6313-21H32	21/32" DIA
6313-11H16	11/16" DIA
6313-23H32	23/32" DIA
6313-3H4	3/4" DIA
6313-25H32	25/32" DIA
6313-13H16	13/16" DIA
6313-27H32	27/32" DIA
6313-7H8	7/8" DIA
6313-29H32	29/32" DIA
6313-15H16	15/16" DIA
6313-31H32	31/32" DIA
6313-0D1	.1" DIA
6313-0D16	.16" DIA
6313-0D24	.24" DIA
6313-0D275	.275" DIA
6313-0D35	.35" DIA
6313-0D425	.425" DIA

Part No.	Diameter
6313-0D6	.6" DIA
6313-0D65	.65" DIA
6313-0D7	.7" DIA
6313-0D8	.8" DIA
6313-1	1.0" DIA
6313-1D2	1.2" DIA
6313-1D4	1.4" DIA
6313-1D6	1.6" DIA
6313-1D8	1.8" DIA
6313-2	2.0" DIA
6313-2D4	2.4" DIA
6313-2D5	2.5" DIA
6313-2D8	2.8" DIA
6313-3	3.0" DIA
6313-3D2	3.2" DIA
6313-3D5	3.5" DIA
6313-3D6	3.6" DIA
6313-4	4.0" DIA

Part No.	Diameter
6313-4D5	4.5" DIA
6313-5	5.0" DIA
6313-5D5	5.5" DIA
6313-6	6.0" DIA
6313-6D5	6.5" DIA
6313-7	7.0" DIA
6313-7D5	7.5" DIA
6313-8	8.0" DIA
6313-8D5	8.5" DIA
6313-9	9.0" DIA
6313-9D5	9.5" DIA
6313-10	10.0" DIA
6313-10D5	10.5" DIA
6313-11	11.0" DIA
6313-11D5	11.5" DIA
6313-12	12.0" DIA
6313-14	14.0" DIA
6313-16	16.0" DIA