

HANDHELD SPECTROPHOTOMETERS (STANDARD TYPE)

FOUR KINDS OF APERTURE

GRATING
SPECTROPHOTOMETRIC



DATA
OUTPUT

MATCHING COLOR
CARD QUICKLY

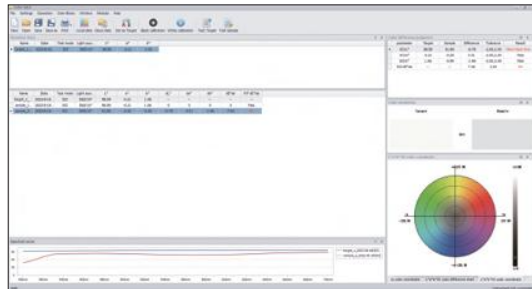
- Conforms with CIE No.15, ISO7724-1, ASTM E1164 and DIN5033 Teil7 standards
- Grating spectrophotometric, 3.5" IPS full color screen, dual optical path high precise CMOS array sensor
- Use long life and low power consumption combined LED light source, include UV and exclude UV measurement
- Camera locating function, switchable four apertures
- Large capacity storage space, over 20000 measurement data
- Two standard observer angles, a variety of illuminant, a variety of color indexes, conforms with a variety of standard colorimetric data
- Measure sample spectra, accurate Lab data, can be used in color matching and accurate color transmission



SPECIFICATION

| Part No. | 5701-D40 | 5701-D45 |
|-------------------------------|--|---|
| Optical geometry | D/8 (diffused illumination/8° direction reception), SCI+SCE (specular component included+specular component excluded) | 45/0 (45° illumination/vertical reception) |
| Integrating sphere size | 1.57" DIA | ring lighting strips |
| Light source | LED (full band balanced LED)+UV | LED (full band balanced LED) |
| Spectrophotometric mode | grating | |
| Sensor | dual optical path high precise CMOS array sensor | |
| Wavelength range | 15.75~27.56µm | |
| Wavelength interval | .39µm | |
| Reflectance measurement range | 0~200% | |
| Reflectance resolution | 0.01% | |
| Display resolution | 0.01 | |
| Illumination area/aperture | MAV .43" DIA; SAV .24" DIA, .12" DIA; MINI .04×.12" | |
| Color space | CIE-Lab, CIE-LCh, HunterLab, CIE Luv, XYZ, Yxy, RGB | |
| Color difference formula | ΔE^*ab , ΔE^*cmc , ΔE^*94 , ΔE^*00 , ΔE^*ch , ΔE^*uv , ΔEab | |
| Other colorimetric index | whiteness (ASTM E313-00, ASTM E313-73, CIE/ISO, AATCC, hunter, taube berger stensby), yellowness (ASTM D1925, ASTM 313-00, ASTM E313-73), blackness (My, dM), color fastness, tint (ASTM E313-73) color density CMYK (A, T, E, M), millm, munsell, opacity, color strength | |
| Observer angle | 2°/10° | |
| Illumination | A, B, C, D50, D55, D65, D75, F1, F2, F3, F4, F5, F6, F7, F8, F9, F10, F11, F12, CWF, U30, U35, DLF, NBF, TI83, TI84, ID50, ID 65, LED-B1, LED-B2, LED-B3, LED-B4, LED-B5, LED-BH1, LED-RGB1, LED-V1, LED-V2 | |
| Measuring time | about 1.5s | |
| Repeatability | spectral reflectance | within 0.08% of standard deviation |
| | colorimetric values | $\Delta E^*ab \leq 0.025$ (after whiteboard correction, measuring the whiteboard 30 times at 5s interval) |
| Inter-instrument error | $\Delta E^*ab \leq 0.25$ (BCRA series II, average value of 12 color plates) | |
| Data port | USB, bluetooth | |
| Light source lifetime | 10 years, more than 1 million times measurements | |
| Battery | 3.7V/3000mAh, rechargeable 8000 times continuous tests | |
| Dimension | 3.74×5.08×9.09" | |
| Weight | 1.65lb | |

software (included), test can be controlled from the software, display test data, report



software

Report No: _____

Report Name: _____

Report Date: _____

Report Time: _____

Report User: _____

Report Location: _____

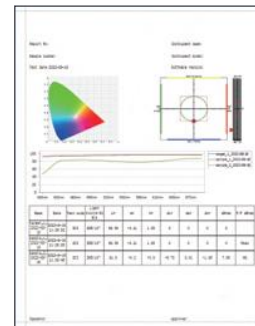
Report Status: _____

Report Description: _____

Report Data:

| Item | Value | Unit | Min | Max | Avg | Std | Min | Max | Avg | Std |
|------|--------|------|-------|--------|--------|------|-------|--------|--------|------|
| 1.1 | 100.00 | % | 99.99 | 100.01 | 100.00 | 0.01 | 99.99 | 100.01 | 100.00 | 0.01 |
| 1.2 | 100.00 | % | 99.99 | 100.01 | 100.00 | 0.01 | 99.99 | 100.01 | 100.00 | 0.01 |
| 1.3 | 100.00 | % | 99.99 | 100.01 | 100.00 | 0.01 | 99.99 | 100.01 | 100.00 | 0.01 |
| 1.4 | 100.00 | % | 99.99 | 100.01 | 100.00 | 0.01 | 99.99 | 100.01 | 100.00 | 0.01 |
| 1.5 | 100.00 | % | 99.99 | 100.01 | 100.00 | 0.01 | 99.99 | 100.01 | 100.00 | 0.01 |
| 1.6 | 100.00 | % | 99.99 | 100.01 | 100.00 | 0.01 | 99.99 | 100.01 | 100.00 | 0.01 |
| 1.7 | 100.00 | % | 99.99 | 100.01 | 100.00 | 0.01 | 99.99 | 100.01 | 100.00 | 0.01 |
| 1.8 | 100.00 | % | 99.99 | 100.01 | 100.00 | 0.01 | 99.99 | 100.01 | 100.00 | 0.01 |
| 1.9 | 100.00 | % | 99.99 | 100.01 | 100.00 | 0.01 | 99.99 | 100.01 | 100.00 | 0.01 |
| 1.10 | 100.00 | % | 99.99 | 100.01 | 100.00 | 0.01 | 99.99 | 100.01 | 100.00 | 0.01 |

pure data report



graphic report

STANDARD DELIVERY

| | |
|--------------------------|-------|
| Main unit | 1 pc |
| White calibration cavity | 1 pc |
| Measuring aperture | 9 pcs |
| USB cable | 1 pc |
| USB disk | 1 pc |
| AC/DC adapter | 1 pc |
| Black light trap | 1 pc |



white calibration cavity (included)

connect to computer



computer is optional