

COATING THICKNESS GAUGES (ADVANCED TYPE)



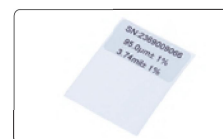
- Can measure the thickness of non-magnetic coating and non-metallic coating on magnetic metal substrate
Substrate: iron, steel, magnetic stainless steel
Coating: zinc, aluminum, copper, chrome, tin, plastic, powder, paint (not for nickel)
- Can measure the thickness of non-conductive coating on non-magnetic metal substrate
Substrate: copper, aluminum, zinc, non-magnetic stainless steel
Coating: plastic, powder, paint, anodizing (not for chrome and zinc plating)
- Zinc coating weight mode displays zinc layer thickness and weight
- Upper and lower limits can be set, over-limit alarm alert
- Data statistics and chart analysis
- Color LCD screen automatically rotates for different angles



Fe zero calibration plate (included)



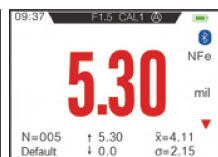
NFe zero calibration plate (included)



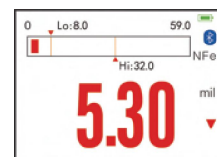
standard foil (included)



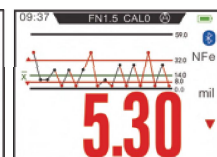
reading only



reading and statistics



reading and bar graph



reading and run chart

SPECIFICATION

Part No.	5411-TC15	5411-TC30	5411-TF50*
Measuring range	FE/NFE (auto recognition): 0~59mils	FE/NFE (auto recognition): 0~118mils	FE: 0~196mils
Accuracy	≤59mils: ±(.04mils+2%L) >59mils: ±(.06mils+3%L), L is measuring thickness in mils		
Resolution	0.01mils (0~9.99mils), 0.1mils (10.0~99.9mils), 1mil (≥100mils)		
Measuring principle	FE mode: magnetic induction, NFE mode: eddy current effect		FE mode: magnetic induction
Calibration mode	zero calibration, one point calibration, two-point calibration, five-point calibration		
Measuring mode	single mode, continuous mode, average mode, zinc coating weight mode (for FE mode only)		
Minimum curvature radius	convex .20"; concave .98"		
Minimum measuring area	.24" DIA		
Minimum substrate thickness	.01"		
Storage	1600 (100×16 groups)		
Operation environment	temperature: 14°F~122°F; humidity: <80% (non-condensing)		
Unit	mil, μm		
Language	English, Chinese		
Power supply	2×1.5V AA batteries or USB		
Dimensions (L×W×H)	5.28×2.64×1.50"		
Net weight	.30lb		

STANDARD DELIVERY

Part No.	5411-TC15	5411-TC30	5411-TF50
Main unit	1 pc		1 pc
Fe zero calibration plate	1 pc		1 pc
NFe zero calibration plate	1 pc		—
Standard foil	1 set		1 set
1.5V AA battery	2 pcs		2 pcs
Protective case	1 pc		1 pc