

## HALL-EFFECT THICKNESS GAUGE

### PART No. 5408-HE25



- Non-destructive measurement of thickness for non-magnetic materials such as plastic, glass, aluminum, titanium, and synthetic materials; measurement accuracy unaffected by material shape
- Automatic or manual degaussing and zeroing before testing ensures measurement accuracy
- Real-time display of measurement results and automatic capture of maximum and minimum values
- Difference mode displays the difference between actual thickness and preset reference thickness
- Timed measurement mode records maximum, minimum, average values, and curves within preset intervals
- Upper and lower limits can be set, over-limit alarm alert
- Measurement results can be stored in memory and the optional software enables statistical analysis and exporting report
- Parameter settings and measurement data are protected by administrator password
- 7-inch color touchscreen

### MEASUREMENT APPLICATION



PET container measurement



glass container measurement



aluminum container measurement



bottle preform measurement

### SPECIFICATION

Range *	determined by the calibration performed with standard gauge blocks
Accuracy	see the table below
Resolutoin	high .0001inch, low .001inch
Unit	inch, mm
Calibration mode	single-point calibration, multi-point calibration
Data storage	4950
Data transmission	RS232
Power supply	12.6V rechargeable Li-ion battery or power adapter
Dimensions (L×W×H)	8.27×5.91×2.56"
Net weight	4.52lb

\* The gauge blocks and steel balls set is required

SPECIFICATION OF MAIN UNIT

Accuracy of single-point calibration	Accuracy of multi-point calibration	Minimum measuring area radius	Suggested measuring range
.12mils+5% (calibrated with 1.59mm steel ball)	.12mils+3% (calibrated with gauge blocks and .063" steel ball)	.03"	0 ~.08"
.12mils+4% (calibrated with 3.18mm steel ball)	.12mils+2% (calibrated with gauge blocks and .125" steel ball)	.63"	0 ~.16"
.12mils+3% (calibrated with 4.76mm steel ball)	.12mils+1% (calibrated with gauge blocks and .187" steel ball)	.94"	0 ~.16" or 0 ~.24"
.12mils+3% (calibrated with 5.00mm steel ball)	.12mils+1% (calibrated with gauge blocks and .197" steel ball)	.96"	.04" ~ .31" or .04" ~ .39"

GAUGE BLOCKS AND STEEL BALLS SET (OPTIONAL)

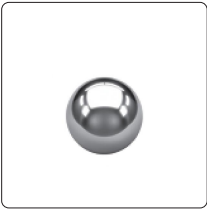
Part No.	Range	Gauge blocks	Radius of steel balls
5408-T4	.16"	0.23mm, 0.5mm, 1.0mm, 1.5mm, 2.0mm, 2.5mm, 3.0mm, 3.5mm, 4.0mm	1.59mm, 3.18mm, 4.76mm
5408-T6	.24"	0.23mm, 0.5mm, 1.0mm, 1.5mm, 2.0mm, 2.5mm, 3.0mm, 3.5mm, 4.0mm, 4.5mm, 5.0mm, 5.5mm, 6.0mm	1.59mm, 3.18mm, 4.76mm
5408-T8	.31"	0.23mm, 0.5mm, 1.0mm, 1.5mm, 2.0mm, 2.5mm, 3.0mm, 3.5mm, 4.0mm, 4.5mm, 5.0mm, 5.5mm, 6.0mm, 6.5mm, 7.0mm, 7.5mm, 8.0mm	3.18mm, 4.76mm, 5.00mm
5408-T10	.39"	0.23mm, 0.5mm, 1.0mm, 1.5mm, 2.0mm, 2.5mm, 3.0mm, 3.5mm, 4.0mm, 4.5mm, 5.0mm, 5.5mm, 6.0mm, 6.5mm, 7.0mm, 7.5mm, 8.0mm, 8.5mm, 9.0mm, 9.5mm, 10.0mm	3.18mm, 4.76mm, 5.00mm

STANDARD DELIVERY

Main unit	1 pc
Probe (socket included)	1 pc
RS232 cable	1 pc
Foot switch	1 pc
Power adapter	1 pc

OPTIONAL ACCESSORY

.16" gauge blocks and steel balls set	5408-T4
.24" gauge blocks and steel balls set	5408-T6
.31" gauge blocks and steel balls set	5408-T8
.39" gauge blocks and steel balls set	5408-T10
Software (dongle included)	5408-SW



steel ball (included)



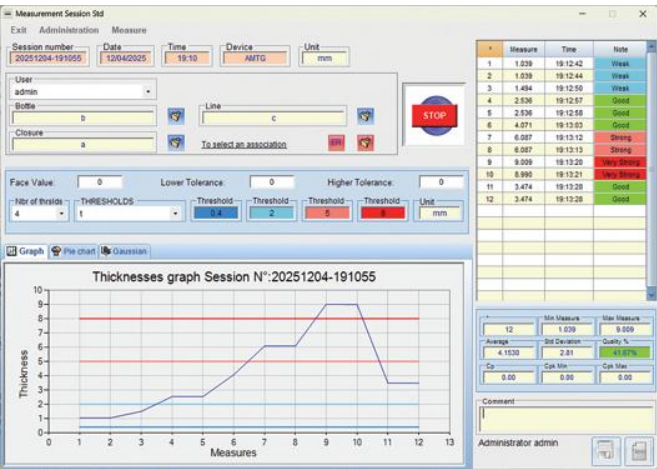
steel ball support (included)



gauge block (included)



foot switch (included)



software (optional)