

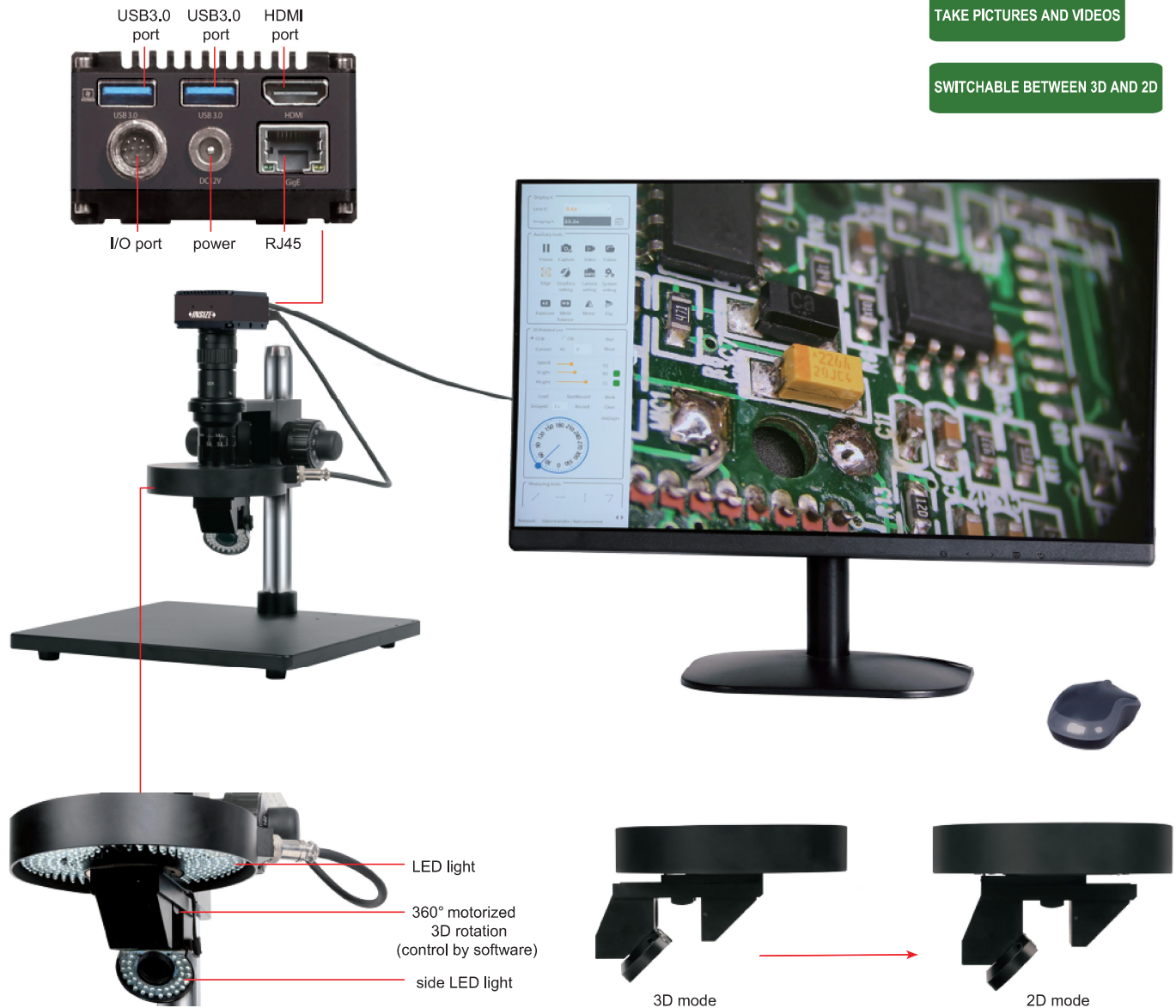
2D/MOTORIZED ROTATION 3D MICROSCOPE (WITH DISPLAY)

PART NO. 5327-MD10

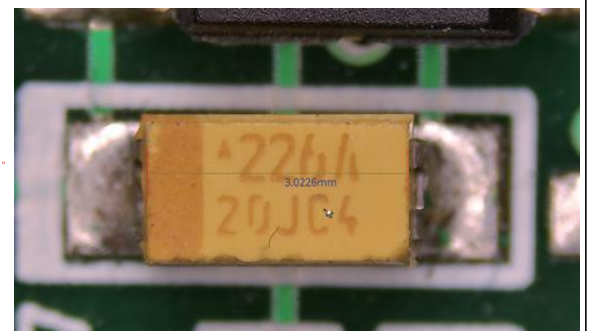
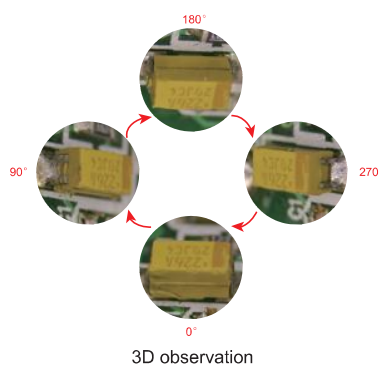
MOTORIZED 3D ROTATION

TAKE PICTURES AND VIDEOS

SWITCHABLE BETWEEN 3D AND 2D



- 4K high-definition 3D image
- Supports switching from 3D monitoring to 2D
- Take pictures and videos, save to USB flash disk
- Built-in software without computer, operated by mouse
- Measurement results can be sent to Excel
- Automatic white balance and exposure
- Brightness, contrast ratio, gain are adjustable
- 2D measurement can be achieved by connecting to computer software via an RJ45 port



2D measurement

Magnification	26X~206X
View field	.944x.787~.118x.078"
Sensor	1/1.8" CMOS
Pixel	8M
Resolution	3840×2160
Single pixel size	.00008×.00008"
Frame rate	60fps
Focus distance (2D)	3.385"
Focus distance (3D)	1.968"
Output	HDMI
Power supply	power adapter
Dimension (L×W×H)	12.992×11.811×12.519"
Net weight	17.2lb

Objective magnification	Image magnification	View field	Measuring accuracy
0.6X	26X	.905×.511"	±.0002"
0.8X	34X	.669×.393"	±.0002"
1X	42X	.551×.314"	±.0002"
1.5X	62X	.354×.196"	±.0002"
2X	83X	.275×.157"	±.0002"
2.5X	103X	.216×.118"	±.00016"
3X	123X	.177×.098"	±.00016"
3.5X	144X	.157×.078"	±.00016"
4X	165X	.137×.078"	±.00012"
4.5X	185X	.118×.059"	±.00012"
5X	206X	.098×.059"	±.00012"

Main unit (with stand)	1pc
0.5X camera adapter	1pc
1X auxiliary objective	1pc
16G USB flash disk	1pc
White/black plate	1pc
Mouse	1pc
LCD (27")	1pc
Calibration plate	1pc
Power adapter	1pc



The screenshot displays the iVMS-4000 software interface. On the left, there is a vertical toolbar with several sections:

- Top section:** Displays 'Display X' with 'Lens X: 0.6x' and 'Imaging X: 23.2x'.
- Auxiliary tools:** Includes icons for Freeze, Capture, Video, Folder, Edge, Graphics settings, Camera settings, System settings, Exposure, White balance, Mirror, and Flip.
- 3D Rotated Lens:** Features a 'Current' value of 43, a '0°' indicator, and a 'Reset' button. It also has sliders for 'Speed', 'Angle', and 'Height' with corresponding numerical values (53, 43, 72) and green status indicators.
- Customizable rotation angle control:** A circular dial with a blue needle pointing to 0, ranging from 0 to 360 degrees.
- Measuring tools:** Includes a ruler icon and a 'Measuring tools' label.

The main area of the interface shows a real-time video feed of a green printed circuit board (PCB) with various electronic components, including a yellow capacitor labeled '226H 20JJC' and several integrated circuits. The video feed is labeled 'real-time image' on the right side.