

AUTO FOCUS MEASURING MICROSCOPES

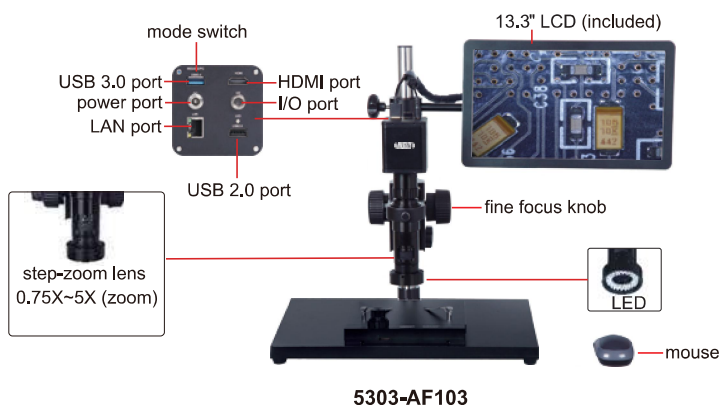
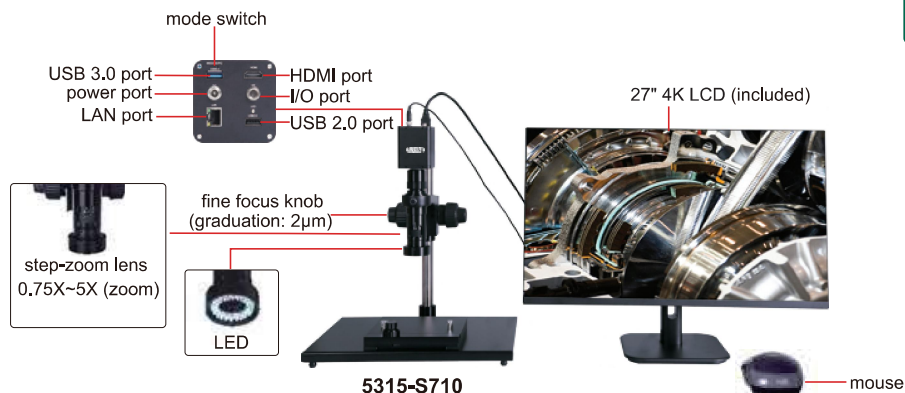


AUTO FOCUS

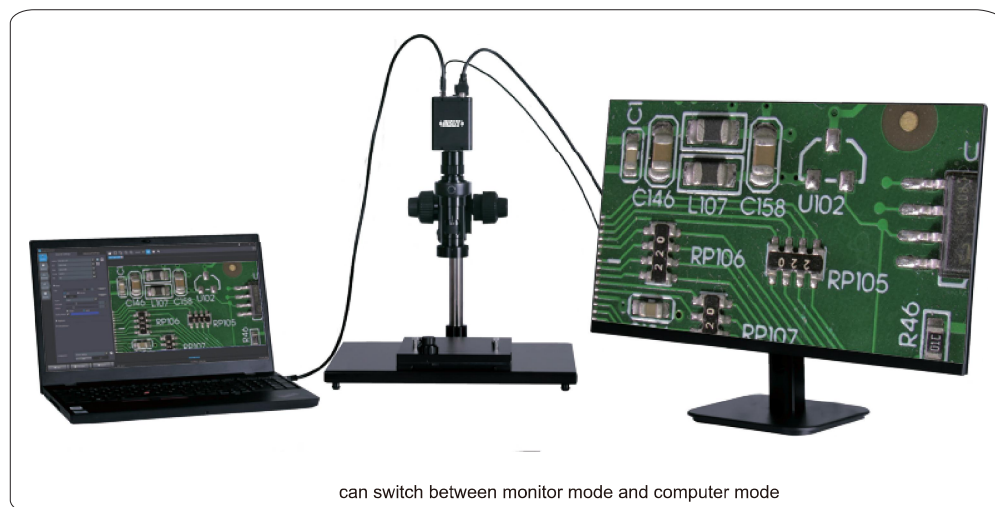
IMAGE
TRANSMISSION

FOCUS
STACKING

IMAGE STICHING



- High-definition image
- Switchable LCD mode and computer mode
- Take pictures or videos, save to memory card
- Measurement results can be sent to Excel
- Auto focus
- Automatic white balance and exposure
- Camera built-in measurement software



Part No.	5315-S710	5303-AF103
Magnification	28X~185X (27" LCD)	20X~123X (13.3" LCD)
Sensor	1/1.7" CMOS	1/2.8" CMOS
Pixel	12M	2M
Resolution	4000×3000	1920×1080
Frame rate	30fps	60fps
Out put	HDMI/USB/LAN	HDMI/USB/LAN
Power supply	power adapter	power adapter
Dimension (LxWxH)	570×300×430mm	570×300×430mm
Weight	15kg	6.5kg

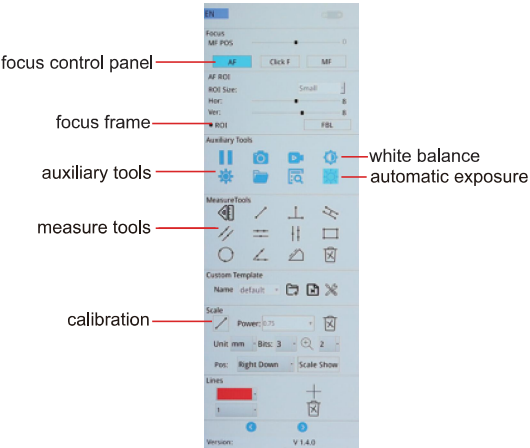
MAGNIFICATION, FOCUS DISTANCE AND VIEW FIELD

Part No.	Specification	Camera adapter	
		0.5X (optional)	1X (optional)
5303-AF103	magnification	20~123X	40~246X
	focus distance	1.89~3.31"	1.89~3.31"
	view field	.51×.28~.09×.04"	.25×.14~.04×.02"
	measuring accuracy	±0.0008"	±0.0008"
5315-S710	magnification	28~185X	56~370X
	focus distance	2.87±.08"	2.87±.08"
	view field	.72×.43~.13×.07"	.34×.22~.06×.03"
	measuring accuracy	±0.0008"	±0.0008"

STANDARD DELIVERY

Main unit	1 pc
LCD	1 pc
0.5X camera adapter	1 pc
1X auxiliary objective	1 pc
Calibration plate	1 pc
16G USB flash drive	1 pc
Mouse	1 pc
X-Y metal stage	1 pc
HDMI	1 pc

SOFTWARE FOR LCD (INCLUDED)



OPTIONAL ACCESSORY

1X camera adapter	ISM-DL-CA1X
2X auxiliary objective	ISM-DL-OB2X
Computer	ISM-DL-COMPUTER
LED light	page 626~627
Auxiliary objective	page 628

PROFESSIONAL SOFTWARE (INCLUDED, FOR COMPUTER)

