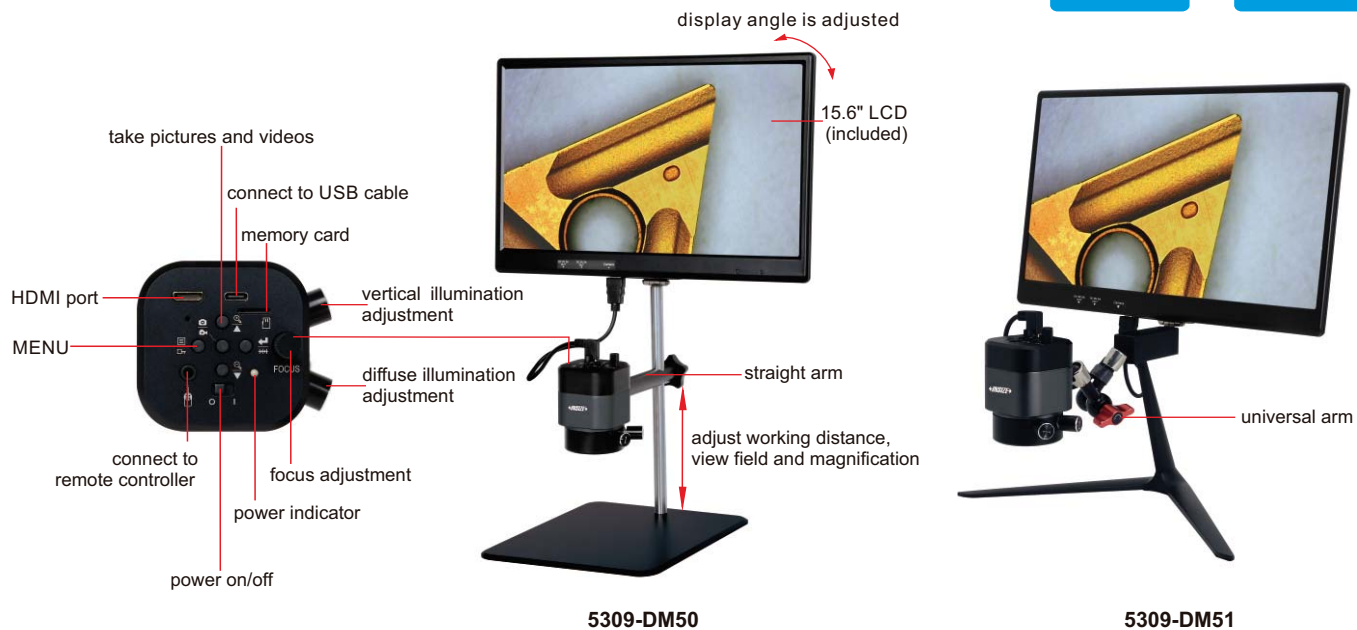


DIGITAL MICROSCOPES

MEASUREMENT

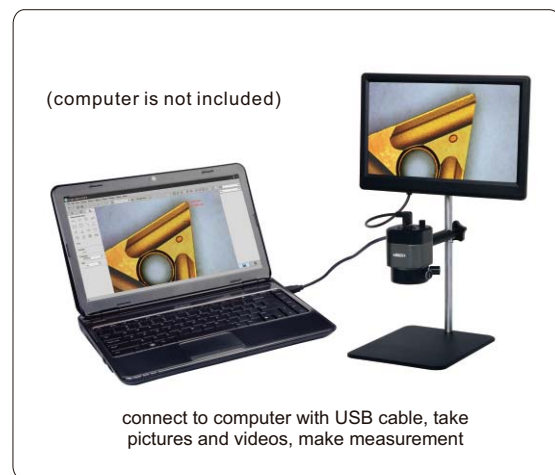
TAKE PICTURES AND VIDEOS



- Independent control of vertical illumination and diffuse illumination
- Back focus adjustment extends working distance
- Take pictures and videos, save to memory card

SPECIFICATION

Part NO.	5309-DM50	5309-DM51
Arm type	straight	universal
Sensor	1/2.8"CMOS	
Pixel	2M	
Resolution	1920×1080	
Exposure	real-time auto, single auto, manual adjustment	
White balance	real-time auto, single auto, manual RGB adjustment	
Record format	pictures:JPG videos:MOV	
Record media	memory card	
Working distance	1.77~6.65"	1.65~7.68"
Magnification	9~41X	7.6~49.4X
View field	.30×.16~1.52×.85"	.28×.16~1.77×.98"
Power supply	DC12V3A	



MAGNIFICATION, VIEW FIELD AND MEASURING ACCURACY (use computers, optional)

Image magnification	View Field	Measuring accuracy
9.0X	1.52×.85"	±.001"
13.0X	1.05×.59"	±.001"
17.0X	.81×.46"	±.001"
22.0X	.63×.35"	±.001"
28.5X	.47×.25"	±.001"
34.0X	.39×.22"	±.001"
41.0X	.30×.16"	±.001"

STANDARD DELIVERY

Main unit	1 pc
Memory card and holder	1 pc
Plastic calibration rule	1 pc
White/black plate	1 pc
Remote controller	1 pc
USB cable	1 pc
Measuring software	1 pc
Power adapter	1 pc



remote controller
(included)



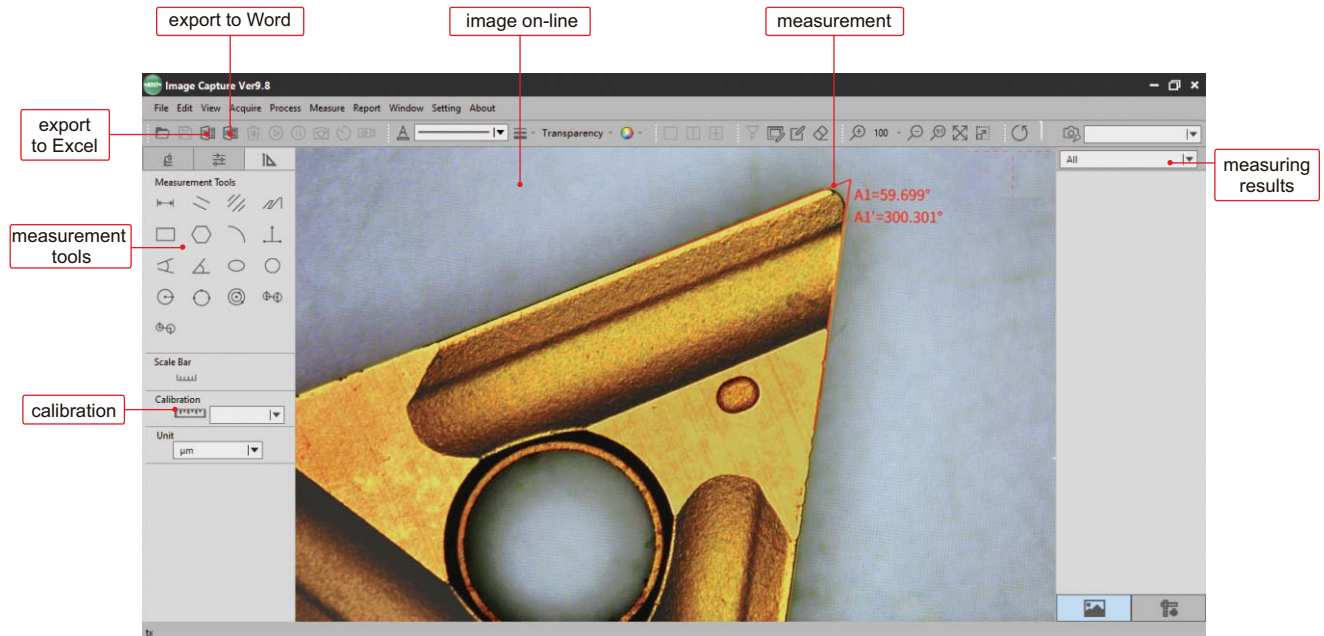
White/black plate



plastic calibration ruler
(graduation 1mm, included)

SOFTWARE FOR COMPUTER

- **Language:** Chinese(Simplified), English, French, Chinese(Traditional), Portuguese, Korean, Japanese
- **Operation system:** Windows 7/8/8.1/10(64bit)

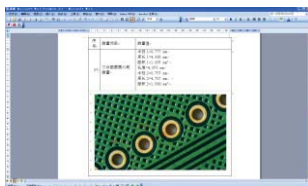


Measurement tools:

- | | | | |
|--|-------------------------------------|--|---------------------------------------|
| straight line distance measurement | parallel lines distance measurement | centre distance between parallel lines measurement | polyline line measurement |
| rectangular measurement | polygon measurement | arc measurement | three-vertical-line measurement |
| four-point perspective measurement | angle measurement | ellipse measurement | round measurement |
| circle measurement by radius | circle measurement by 3-point | torus measurement | center distance measurement by radius |
| center distance measurement by 3-point | | | |

Data export to Word or Excel:

export to word



export to excel

