

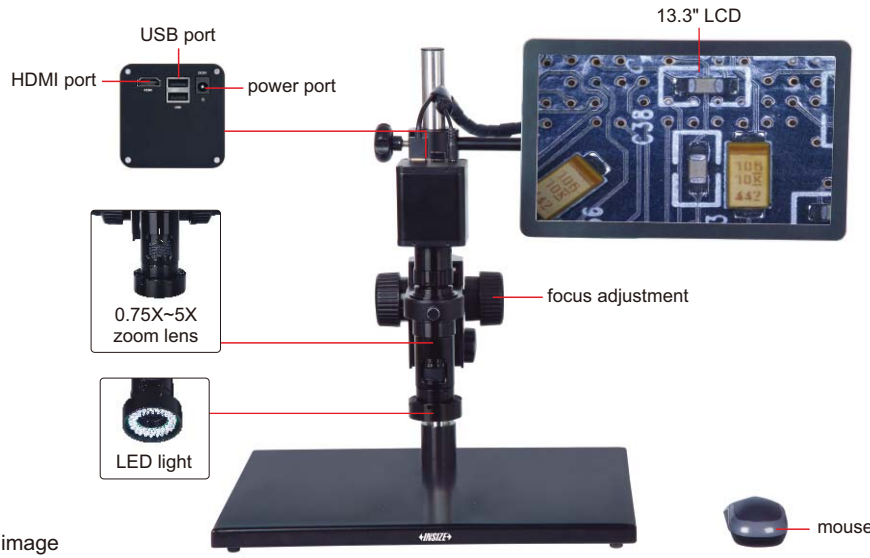
DIGITAL AUTO FOCUS MICROSCOPE (WITH DISPLAY)

PART NO. 5303-AF103

AUTO FOCUS

TAKE PICTURES AND VIDEOS

MEASUREMENT



16G USB flash disk (included)



0.5X camera adapter (included)



1X auxiliary objective (included)



0.75X-5X zoom lens

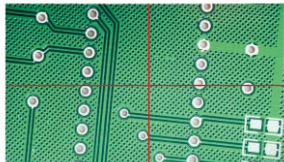


LED light



mouse

- 1080P high-definition image
- Auto focus camera
- Take pictures and videos, saved to USB flash disk
- Automatic exposure and white balance
- Brightness, contrast ratio, gain are adjustable
- Display cross hair (blue/green/red/yellow/black/brown colors)
- Built-in software without computer, operation by mouse



display cross hair (blue/green/red/yellow/black/brown colors)



1X camera adapter (optional)



2X auxiliary objective (optional)



X-Y glass stage (optional) (X-Y travel: 2.91×2.36")

MAGNIFICATION, FOCUS DISTANCE AND VIEW FIELD

Auxiliary objective	Specification	Camera adapter	
		0.5X (included)	1X (optional)
1X (included)	Magnification	20~123X	40~246X
	Focus distance	1.89~3.31"	1.89~3.31"
	View field	.51×.28~.09×.04"	.25×.14~.04×.02"
	Measuring accuracy	±0.0008"	±0.0008"
2X (optional)	Magnification	40~246X	80~492X
	Focus distance	.94~1.65"	.94~1.65"
	View field	.26×.14~.04×.02"	.13×.07~.02×.01"
	Measuring accuracy	±0.0008"	±0.0008"

AUTO FOCUS DISTANCE

Zoom objective scale	0.75X	1X	1.5X	2X	2.5X
Auto focus distance	1.89~3.31"	1.97~3.07"	2.17~2.87"	2.44~2.80"	2.56~2.76"

Zoom objective scale	3X	3.5X	4X	4.5X	5X
Auto focus distance	2.60~2.76"	2.64~2.76"	2.68~2.76"	2.68~2.76"	2.68~2.76"

SPECIFICATION

Magnification	20X~123X
Sensor	1/2.8" CMOS
Pixel	2M
Resolution	1920×1080
Frame rate	60fps
Output	HDMI
Power supply	power adapter
Dimension (L×W×H)	22.44×11.81×16.93"
Weight	14.33lb

STANDARD DELIVERY

Main unit	1 pc
0.5X camera adapter	1 pc
1X auxiliary objective	1 pc
Calibration plate	1 pc
16G USB flash disk	1 pc
White/black plate	1 pc
Mouse	1 pc
HDMI cable	1 pc
Power adpter	2 pcs

OPTIONAL ACCESSORY

1X camera adapter	ISM-DL-CA1X
2X auxiliary objective	ISM-DL-OB2X
X-Y glass stage (travel: 2.91×2.36")	ISM-DL-STAGE
X-Y metal stage	ISM-DL-STAGE1
LED auxiliary illumination	ISM-DL-LED
Coaxial light illumination	ISM-DL-COAXIAL
Auxiliary objective lens	Page 123