

## BLUETOOTH DIGITAL INDICATING MICROMETERS

**ABSOLUTE ENCODER, THE ORIGINAL  
DATA REMAINS AFTER POWER OFF**

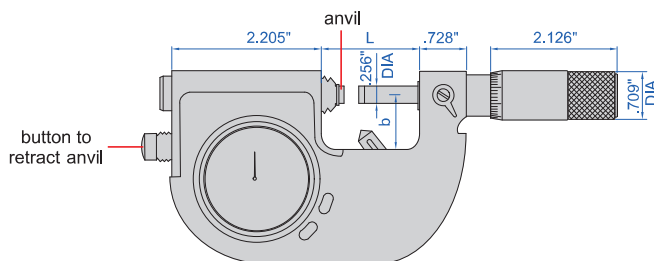
**IP54  
WATERPROOF**

**BUILT-IN  
BLUETOOTH**

**ATTENTION: SETTING  
STANDARDS ARE NOT INCLUDED**

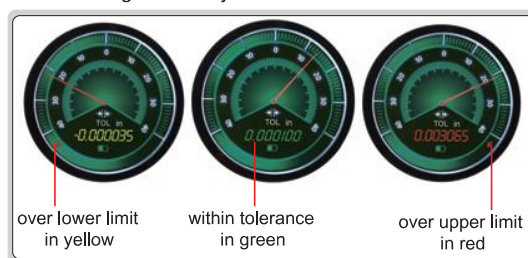


**3507-25E**



- Absolute encoder, the original data remains after power off
- Measuring stroke of anvil:  $>.039''$
- Reading in digital and analog
- Button function: on/off, zero setting, inch/mm, tolerance, display setting, bluetooth, signal mode setting, data output
- Android and iPhone APP, USB type-C cable are included
- Carbide measuring faces
- Power: rechargeable Li-battery, for 20 hours continuous working (bluetooth transmission reduce working hours)
- Optional accessory: gauge blocks grade 0 (4112-A series), for zero setting

warning in red or yellow when over tolerance



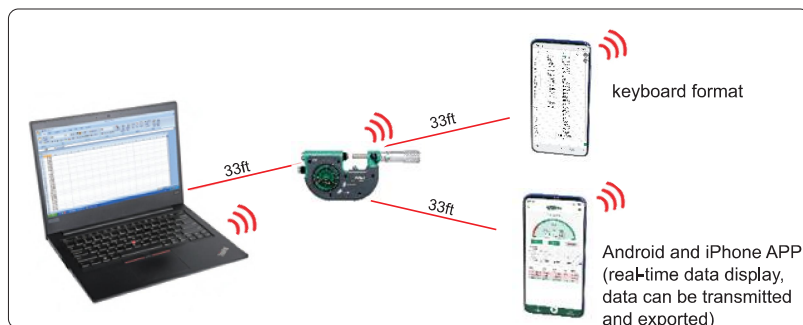
charge pal



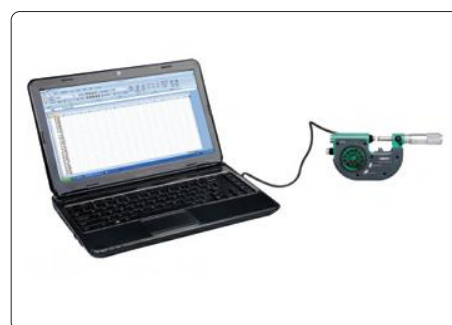
Part No.	Micrometer head			Digital indicator			Repeatability	L	b	Remarks
	range	graduation	accuracy	range	resolution	accuracy				
3507-25E	0-1"	.0001"	.00015"	$\pm.002''$	.000005"	$\pm.00004''$	.00001"	1.398"	.591"	includes charge pal
3507-50E	1-2"	.0001"	.00015"	$\pm.002''$	.000005"	$\pm.00004''$	.00001"	2.382"	.984"	includes charge pal
3507-75E	2-3"	.0001"	.00015"	$\pm.002''$	.000005"	$\pm.00004''$	.00001"	3.386"	1.476"	includes charge pal
3507-100E	3-4"	.0001"	.00015"	$\pm.002''$	.000005"	$\pm.00004''$	.00001"	4.370"	1.969"	includes charge pal
3507-25BE	0-1"	.0001"	.00015"	$\pm.002''$	.00001"	$\pm.00004''$	.00001"	1.398"	.591"	—
3507-50BE	1-2"	.0001"	.00015"	$\pm.002''$	.00001"	$\pm.00004''$	.00001"	2.382"	.984"	—
3507-75BE	2-3"	.0001"	.00015"	$\pm.002''$	.00001"	$\pm.00004''$	.00001"	3.386"	1.476"	—
3507-100BE	3-4"	.0001"	.00015"	$\pm.002''$	.00001"	$\pm.00004''$	.00001"	4.370"	1.969"	—

### Data output

Data output with bluetooth (transmission distance is 33ft)	keyboard format	data can be transmitted to Excel, Word, txt, etc.	single transmission
	virtual com port	data can be transmitted to Android and iPhone APP	real-time display, data can be transmitted and exported
Data output with USB cable (cable length 6ft)	keyboard format	data can be transmitted to Excel, Word, txt, etc.	single transmission
	virtual com port	data can be transmitted to serial communication software	single transmission



date output with bluetooth (included)



date output with USB cable (included)