

WIRELESS HIGH PRECISION ELECTRONIC INDICATORS

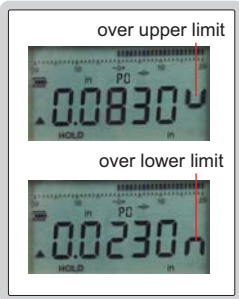
ATTENTION: RECHARGEABLE BATTERY, FOR 24 HOURS CONTINUOUS WORKING

LINEAR BALL BEARINGS FOR TEN MILLION TIMES USE

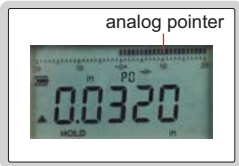
ABSOLUTE ENCODER, THE ORIGINAL DATA REMAINS AFTER POWER OFF



warning when over tolerance



analog pointer



wireless receiver

2134-R1, 2134-R2 (optional)



2134-10E

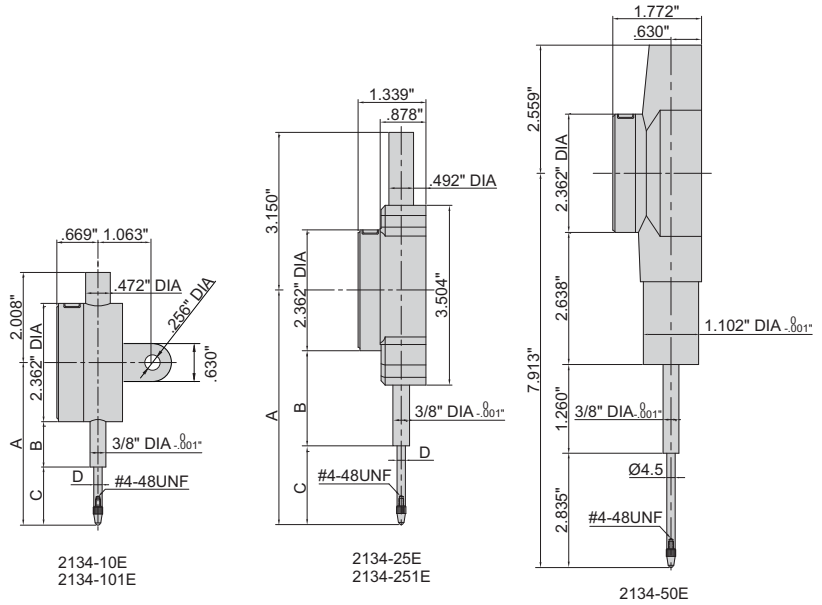


2134-25E



2134-50E

- Built-in wireless transmission, ZigBee singal
- Linear ball bearings for ten million times use
- Absolutely encoder, the original data remains after power off
- Reading in digital and analog
- Button function: data output, tolerance, data preset, data hold, measuring direction change, max./min./TIR, power off time, on/off, mm/inch, adjust resolution
- Power: rechargeable battery, for 24 hours continuous working
- Optional accessory: contact points (page 73) wireless receiver, part no. : 2134-R1(keyboard format) 2134-R2(serial port format)



Low precision

Carbide probe
Adjustable resolution: .00002"/0.0005mm
.00005"/0.001mm
.0005"/0.01mm

Part No.	Range	Accuracy	Hysteresis	A	B	C	D (DIA)	Remark
2134-10E*	.5"/12.7mm	±.00012"	.00006"	2.969"	.811"	.976"	.197"	flat back
2134-10LE*	.5"/12.7mm	±.00012"	.00006"	2.969"	.811"	.976"	.197"	lug back
2134-25E*	1"/25.4mm	±.00012"	.00006"	4.311"	1.516"	1.614"	.197"	flat back
2134-50E*	2"/50.8mm	±.00012"	.00006"	—	—	—	—	flat back

High precision

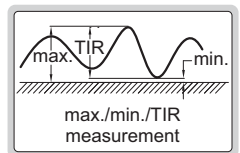
Carbide probe
Adjustable resolution: .00001"/0.0002mm
.00005"/0.001mm
.0005"/0.01mm

Part No.	Range	Accuracy	Hysteresis	A	B	C	D (DIA)	Remark
2134-101E*	.5"/12.7mm	±.00006"	.00004"	3.047"	1.024"	.976"	.157"	flat back
2134-101LE*	.5"/12.7mm	±.00006"	.00004"	3.047"	1.024"	.976"	.157"	lug back
2134-251E*	1"/25.4mm	±.00008"	.00004"	4.571"	1.516"	1.673"	.157"	flat back

spindle lift knob is included



max./min./TIR



* Supplied with manufacturer inspection certificate traceable to NIST USA