



VIDEO

## DIGITAL INDICATORS FOR BORE GAUGES (WITH TRANSMISSION BUTTON AND SIGNAL LIGHT)

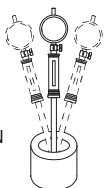
DATA  
OUTPUT

THE ORIGINAL DATA  
REMAINS AFTER POWER OFF

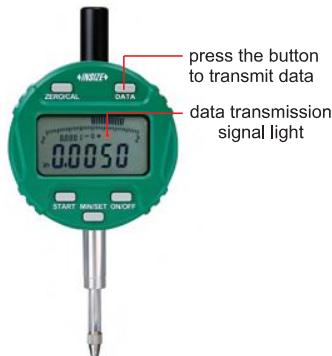
read the diameter directly,  
after inputting the size  
of setting ring.



the minimum value  
tracking function can find  
the diameter automatically.

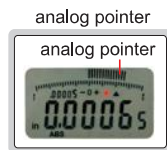
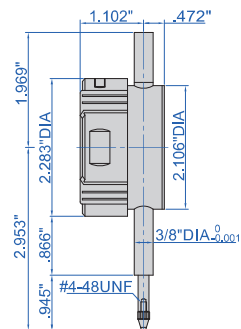


- Specially designed for bore gauges
- The minimum value tracking function can find the diameter automatically
- Read the diameter directly, after inputting the size of setting ring
- Reading in digital and analog
- Display can be rotated by 320°
- Button function: on/off, minimum value tracking, calibration, data preset, inch/metric conversion, data output
- Data remains after power off, no need to recalibrate after power on
- Automatic power off (time is adjustable)
- Power:
  - with data interface: CR2032
  - built-in wireless: rechargeable Li-battery
- Optional accessory: backs, contact points



2108-10EFWL

press the button  
to transmit data  
data transmission  
signal light



analog pointer

analog pointer



display can be  
rotated by 320°

With data interface (data output cable part no. 7315-51B need receiver, 7302-40M, 7305-40M, optional)

Part No.	Range	Resolution	Accuracy	Hysteresis	Cap	Remark
2108-10EF *	.5"/12.7mm	.0001"/0.002mm (can switch to .0005"/0.01mm)	±.0015"	.0005"	cannot lift	flat back
2108-101EF *	.5"/12.7mm	.00005"/0.001mm	±.00015"	.00005"	cannot lift	flat back

Built-in wireless (receiver part no. 7315-2/3/6/7/8/9 is required, optional)

Part No.	Range	Resolution	Accuracy	Hysteresis	Cap	Remark
2108-10EFWL *	.5"/12.7mm	.0001"/0.002mm (can switch to .0005"/0.01mm)	±.0015"	.0005"	cannot lift	flat back
2108-101EFWL *	.5"/12.7mm	.00005"/0.001mm	±.00015"	.00005"	cannot lift	flat back

\* Supplied with manufacturer inspection certificate