

DIGITAL RTJ RING GROOVE CALIPERS

DATA
OUTPUT

- Measure ring grooves of flange
- Resolution .0005"/0.01mm
- Button function: on/off, set, zero, inch/mm, data preset
- Battery CR2032
- Made of stainless steel

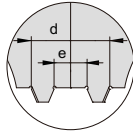
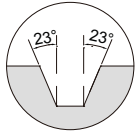
1179-300
preset buttons



1179-300

applicable for RTJ ring grooves with angle 23°

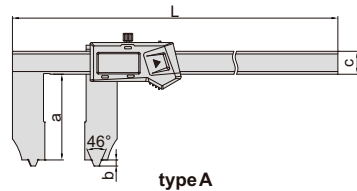
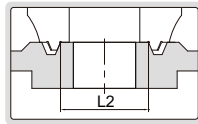
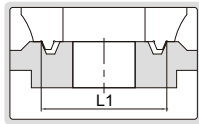
d and e need to be added on the reading



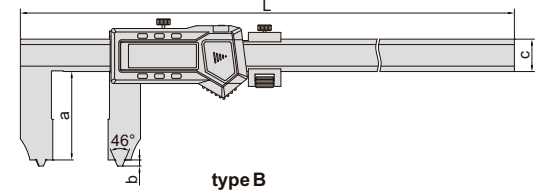
1179-600

measure outside diameter of RTJ ring groove

measure inside diameter of RTJ ring groove



type A



type B

With data interface

Part No.	Range (inside diameter of RTJ ring groove)	Range (outside diameter of RTJ ring groove)	Angle of RTJ ring groove	Accuracy	Type	L	a	b	c	d	e	Data output cable (optional)
1179-300	.4-12"/10-300mm	1-12"/25-300mm	23°	±.0025"	A	16.142"	2.500"	.177"	.669"	.984"	.394"	7315-21, 7302-21
1179-600	.4-24"/10-600mm	1-24"/25-600mm	23°	±.0030"	B	30.315"	2.579"	.177"	.945"	.984"	.394"	7315-22, 7302-22
1179-1000	.6-40"/15-1000mm	1.2-40"/30-1000mm	23°	±.0035"	B	48.032"	3.543"	.197"	1.220"	1.181"	.591"	7315-22, 7302-22

Built-in wireless (receiver part no. 7315-2/3/6/7/8 is required)

Part No.	Range (inside diameter of RTJ ring groove)	Range (outside diameter of RTJ ring groove)	Angle of RTJ ring groove	Accuracy	Type	L	a	b	c	d	e
1179-300WL	.4-12"/10-300mm	1-12"/25-300mm	23°	±.0025"	A	16.142"	2.500"	.177"	.669"	.984"	.394"
1179-600WL	.4-24"/10-600mm	1-24"/25-600mm	23°	±.0030"	B	30.315"	2.579"	.177"	.945"	.984"	.394"