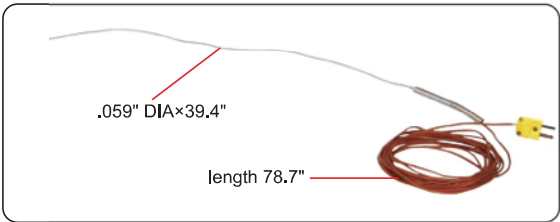
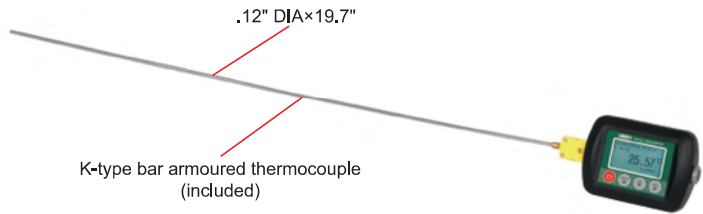


# DIGITAL THERMOMETER (HIGH TEMPERATURE TYPE)

## PART NO. 0324-DT11

- Can measure the temperature of liquid, steam and gas
- Real time/MAX/MIN/AVG temperature display
- Built-in gravity sensor, automatic horizontal or vertical screen display
- Display backlight
- Automatic power off
- Software is included: on-line monitoring, data storage



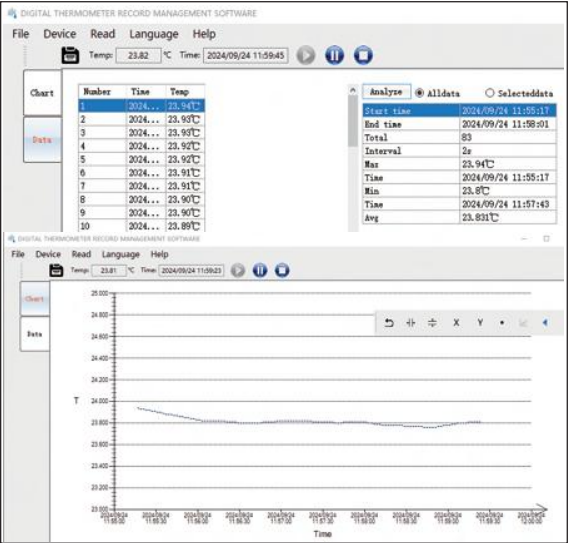
K-type armoured thermocouple with extension wire (optional)

### SPECIFICATION OF MAIN UNIT

Thermocouple type	K/E/N/T/S
Temperature range	K: -328°F~2501°F
	E: -328°F~1832°F
	N: -328°F~2372°F
	T: -328°F~752°F
	S: -58°F~3214°F
Temperature accuracy*	K: ±1.5°F (at -328°F~32°F); ±1.1°F (at 32°F~2501°F)
	E: ±1.3°F (at -328°F~32°F); ±0.9°F (at 32°F~1832°F)
	N: ±1.5°F (at -328°F~32°F); ±1.1°F (at 32°F~2372°F)
	T: ±1.5°F (at -328°F~32°F); ±1.1°F (at 32°F~752°F)
	S: ±2.7°F (at -58°F~32°F); ±2.2°F (at 32°F~3214°F)
Temperature resolution	.1°F/.01°F (adjustable)
Annual stability	±8μV
Memory capacity	100,000
Logging interval	2s~99s
Power supply	rechargeable lithium battery, working time≥40h
Operating environment	temperature: 14°F~122°F
	humidity: 0%RH~95%RH (non-condensing)
Dimension	2.36×2.48×3.27"
Weight	.19lb

\*Accuracy is specified for ambient temperature between 64.4°F and 82.4°F, the above specification includes the error of the cold junction compensation and does not include the error of thermocouple sensor

computer software (included): connect to PC software via data cable to collect, display and store data



### SPECIFICATION OF SENSOR\*\*

Code	Product	Range***	Accuracy	Dimension	Extension cord
0324-KB1	K-type bar armoured thermocouple	-40°F~2012°F	class 1: ±2.7°F or ±.4%· t-32	.12" DIA×19.7"	/
0324-KE2	K-type armoured thermocouple with extension wire	-40°F~2012°F	class 1: ±2.7°F or ±.4%· t-32	.059" DIA×78.7"	78.7"

\*\*Other models, temperature ranges and dimensions of thermocouples can be customized

\*\*\*Sensors are consumables and are recommended to be used within 1832°F, beyond that the service life will be reduced

### STANDARD DELIVERY

Main unit	1 pc
K-type bar armoured thermocouple (0324-KB1)	1 pc
Software	1 pc
Power adapter	1 pc

### OPTIONAL ACCESSORY

K-type armoured thermocouple with extension wire	0324-KE2
--	----------