

THERMOCOUPLE THERMOMETER (FOUR CHANNELS)
PART NO. 0323-CT47

BUILT-IN
BLUETOOTH

DATA
OUTPUT

- Unit: °F/°C/K
- Channels are compatible with 7 types of thermocouples K, J, T, E, R, S and N
- MAX/MIN/AVG/DIF mode
- 72000 data storage
- Offset value compensation
- Data hold function
- Display backlight
- Over range indicator
- Battery level display
- Automatic power off
- Built-in Bluetooth, mobile APP is included
- Computer software is included



K-type thermocouples (included)

SPECIFICATION

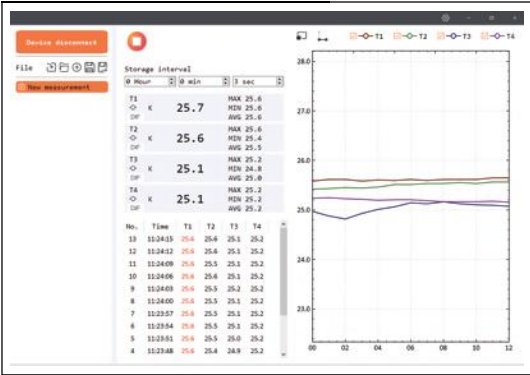
Thermocouple type	J/K/T/E/R/S/N
Temperature range (electrical signal)	K: -328.0°F~2501°F
	J: -346.0°F~2192°F
	T: -418.0°F~752.0°F
	E: -238.0°F~1832°F
	R: 32.0°F~3212°F
	S: 32.0°F~3212°F
Temperature accuracy (electrical signal)	N: -328.0°F~2372°F
	±(0.2%· t +0.9°F) (at 14°F~3212°F);
	±(0.2%· t +1.8°F) (at -328°F~14°F);
	±(0.2%· t +4.5°F) (at -418°F~-328°F)
Temperature resolution	0.1°F (<1000°F); 1°F (≥1000°F)
Repeatability	±(0.1%· t +0.6°F)
Response time	500ms
Logging interval	1s~24h (adjustable)
Memory capacity	72000
Data transmission	TYPE-C USB, Bluetooth
Power frequency anti-interference	50/60Hz
Input protection	60Vmax
Drop proof	39.3"
Power supply	3×AAA alkaline batteries, working time>30h; TYPE-C USB (only be connected to a PC power)
Operation environment	temperature: 14°F~122°F humidity: <90%RH (non-condensing)
Storage environment	temperature: -4°F~140°F humidity: <90%RH (non-condensing)
Dimension	7.09×2.48×1.50"
Weight	.55lb (including batteries)

*Accuracy is specified for ambient temperature between 64.4°F and 82.4°F, the above specification does not include thermocouple probe error

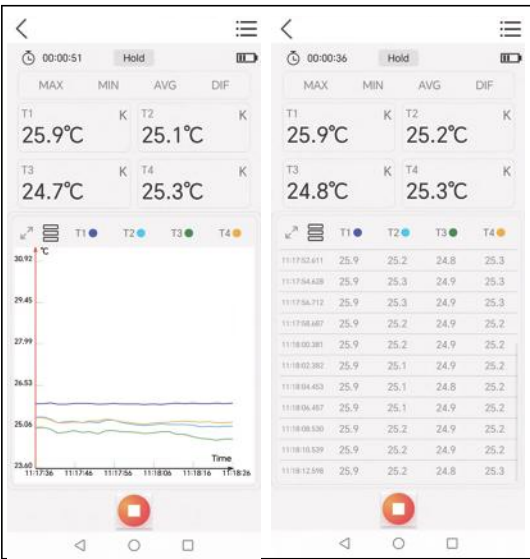
STANDARD DELIVERY

Main unit	1 pc
Battery (AAA)	3 pcs
USB cable	1 pc
K-type thermocouple (0323-K01)	4 pcs

computer software (included): connect to PC software via USB cable to collect, display and store data



mobile APP (included): connect to mobile APP via Bluetooth to collect, display and store data, and can export the data stored on the device



SPECIFICATION OF K-TYPE THERMOCOUPLE*

Code	Range	Accuracy	Length
0323-K01	-40°F~500°F	±0.75%	35.4"

*Other models, temperature range and length of thermocouples can be customized