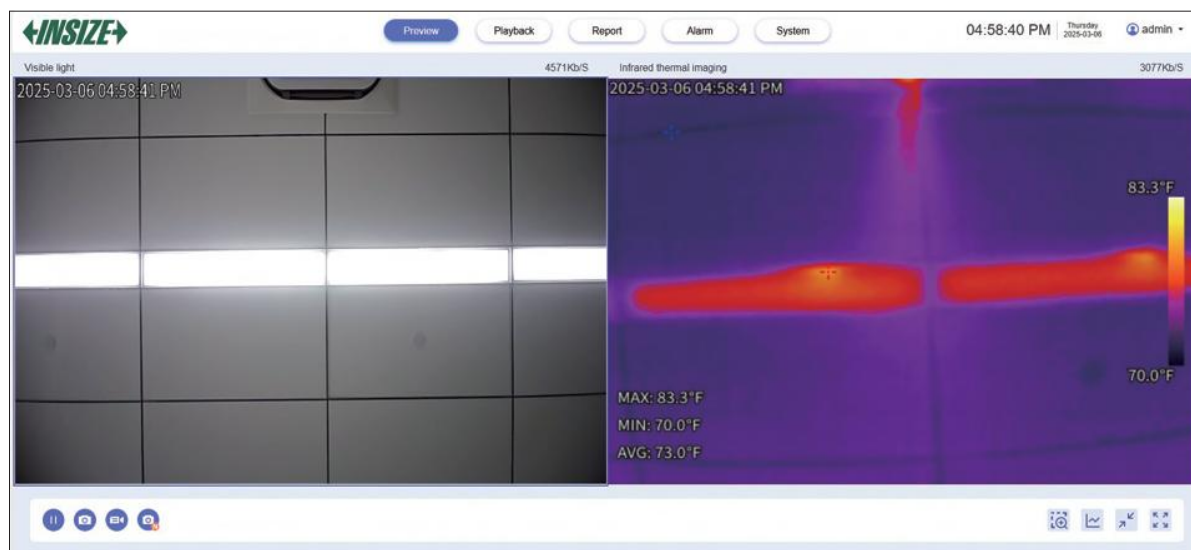


ONLINE INFRARED THERMAL IMAGING CAMERA PART No. 0237-NC200

IP67
WATERPOOF

- Suitable for electric power, electrical industry, mechanical industry, etc.
- Adopt 256×192 infrared detector, together with 1920×1080 visible light sensor
- Support real-time temperature measurement analysis, alarm setting, historical information query and export reports
- Support various installation methods such as magnetic mounting, wall mounting, vertical mounting, hanging mounting and tripod mounting
- Web-side control, no need other App or software



web-side real-time image

SPECIFICATION

Infrared image	detector type	unrefrigerated vanadium oxide, .0003"~.0006"
	infrared resolution	256×192@.0005"
	thermal sensitivity/NETD	45mK@86°F
	lens	.13", 56°×42°
	focusing mode	focus-free
	color palettes	26: white hot, black hot, rainbow and so on
Temperature measurement	featured function	detail enhancement, 2D/3D noise reduction, image flip, dual light fusion
	measurement range	low: -4°F~302°F, high: 212°F~1022°F
	measurement accuracy	±3.6°F or ±2%, whichever is greater
	measurement target	up to 21 targets (spot, line, rectangle, polygon and circle) can be simultaneously measured
	measurement function	cold/hot spot tracking, full-screen point temperature measuring, query and export of information

SPECIFICATION

Visible light	sensor type	1/2.7" CMOS
	max. resolution	1920×1080
	min. illuminance	color: 0.005lux
	lens	.11", 65°×49°
	fill light	white light
	featured function	visible light gain control, 2D/3D noise reduction, backlight compensation, wide dynamic, strong-light photoinhibition, image flip, exposure compensation
Image	video compression	H.264
	image format	JPEG
Protocol and storage	network protocol	IPv4/IPv6, HTTP, SMTP, RTSP, TCP, DHCP, ONVIF (automatic search device, RTSP video stream and device control), GB/T28181, MQTT
	local storage	4G EMMC
System function	language	Chinese/English
	user management	max. 20 users with three levels of user accounts (root, admin and user)
	fault detection	network interrupt detection, IP conflict detection, illegal access, storage exception
	intelligent function	sound and light alarm
Interface	power interface	DC12V±25%
	network interface	100M/1000M ethernet port, POE (802.3 at)
	alarm interface	1 input and 1 output
	other interface	RS485
Environmental parameter	operating environment	-22°F~140°F, ≤95%RH (non-condensing)
	protection	IP67, TVS 6000V lightning protection and surge protection
Physical parameter	power	3.5W
	dimension (L×W×H)	2.80×1.18×4.13"
	weight	.66lb

STANDARD DELIVERY

Main unit	1 pc
Adapter cable	1 pc
Back panel	1 pc